



Agency Evaluation Report

2023 - 2024





Executive Leadership Team

DR. LAURA HEINTZ
Chief Executive Officer

JOVINA NEVES
Chief Financial Officer

ONTSON PLACIDE
Chief Program Officer

BRITTANY HONEYMAN
Executive Assistant

BEATRIZ LODIA
Family and Youth Partnership
Manager

CHRISTINA CAGLE
Director of Family &
Youth Partnership

CHRISTIE SHORROCK
Director of Development

CHRISTINE STANESCU
Controller

DANIELLE PAMINTO
Program Director

DANIELLE VANAMAN
Program Director

DEBORAH BENNETT
Clinical Director

GIBRÁN MÉNDEZ
Director of Quality
Improvement

KIMBERLY WOODS-BURCH
Director of Human Resources

RICHELLE WHITEFORD
Director of Administrative
Services

SARA DECOURSEY
Program Director

TERRELL THOMAS
Strategic Initiative Officer

TONYA BAUHOFFER
Clinical Director

A LETTER FROM THE EXECUTIVE TEAM

We are pleased to present the Annual Agency Evaluation Report for the fiscal year 2023-2024 for Stanford Sierra Youth & Families.

Our organization remains steadfast in its mission to transform lives by nurturing permanent connections and empowering families to solve challenges together, ensuring every young person can thrive.

In thinking about our work in this past year, our staff continue to be creative in blending evidence-based practices and interventions in a format that engages youth of all ages.

We always center our support on the needs of individuals, families, and the communities we serve. Providing services in a mindful manner, we work with families collaboratively to ensure we foster sustainable change that aligns with the family culture and vision of progress and nurturing permanent connections.

As we reflect on the past year, we are proud of the progress and impact we have had on all the families we have served. Our commitment to transforming lives and empowering families remains unwavering.

We look forward to continuing to evolve as an agency with the needs of the communities we serve and continue our work by making a positive impact with youth & families for many years to come!

**Stanford Sierra
Youth & Families**



TABLE OF CONTENTS

3 Who We Are

7 Our Work

21 Who We Serve

27 Program Report Cards



Who We Are

Our Mission

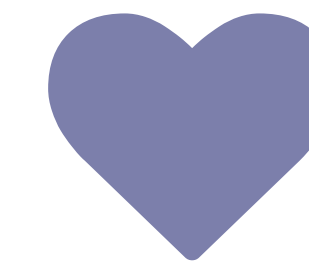
Transforming lives by nurturing permanent connections and empowering families to solve challenges together, so every young person can thrive.

At Stanford Sierra Youth & Families, we pride ourselves on delivering services that exemplify our Mission, Vision, and Values in every interaction with our youth, families, and community.

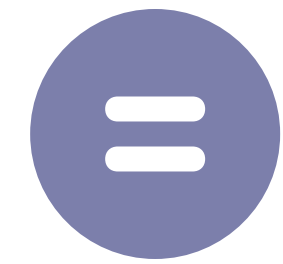
Our Vision

We envision our communities with safe, lifelong connections for all young people, built and strengthened through generations of empowered families.

Our Values



Compassion



Equity



Excellence



Honor



Integrity



Partnership



In FY 23-24, our agency supported:

2,835
individuals

7,087
youth and their families through comprehensive services, creating a broader reach beyond our individual clients

2,021

individuals served in our mental health programs, helping them heal from trauma, manage their emotions, do better in school, and thrive

212

individuals served in our Juvenile Justice Intervention Services programs, creating opportunities for positive youth development

20 Adoptions

16 Reunifications

3 Guardianships

**7 Kinship/Non-related
Extended Family Member**

**# of Successful
Permanency
Outcomes for
FY 23-24**

91%
of individuals
lived in a home-
like setting at
the end of
services



\$353,722

SPENT ON MHSA
FLEX FUNDS

TOP THREE
TYPES OF
SPENDING:

HOTEL/MOTEL
VOUCHERS

RENT GAP

OTHER (MOVING
EXPENSES,
FURNITURE,
ETC.)

**57,530 total service
hours for FY 23-24**

23,648

service hours in the

Home or Community

42%

17,132

service hours for

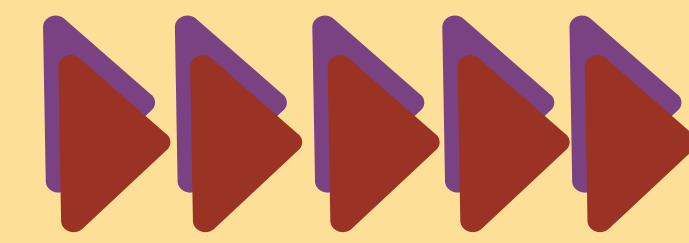
Telehealth

30%

Our Work

In this section, we look at agency highlights that showcase the different ways in which the services we offer our youth and families have impacted them and helped them succeed. Such highlights include meeting treatment goals and decreasing areas of need by way of program outcomes, the CANS-50 (Child Adolescence Needs & Strengths) Assessment, and introduction of new programs throughout the fiscal year.





OUR WORK: DIVERSITY, EQUITY, AND INCLUSION

▶▶ In FY 23-24, SSYAF parented with Sacramento County on the launch of the SMART (Self-Assessment Modification for Anti-Racism) Initiative. The tool, developed by the American Association of Community Psychiatry (AAPC), is the first of its kind created to support behavioral health organization assess the extent to which their current policies and practices support racial equity both internally and in the provision of services. SSYAF along with several other Sacramento County community behavioral health providers used the tool to support racial equity within the county.

- 10 diverse stakeholders from across the agency brought together to complete the assessment
- 6 Domains Assessed
 - Co-Production/Community Engagement
 - Workplace Culture
 - Hiring, Recruitment, Retention & Promotion
 - Community Advocacy
 - Outcomes/Program Evaluation
 - Clinical Care
- 2 New agency policies developed to support **Workplace Culture** and **Hiring, Recruitment, Retention & Promotion**



OUR WORK: OVERALL WELL-BEING

▶▶▶ Stanford Sierra Youth & Families uses the CANS (Child Adolescence Needs & Strengths) Assessment as a tool to gauge the overall well-being of youth participating in a variety of our programs.

▶▶▶ Through these assessments, we can see how a child has improved or maintained positive behaviors and functioning upon completion of services. The graphic below highlights areas where our youth stood out in their well-being at discharge.



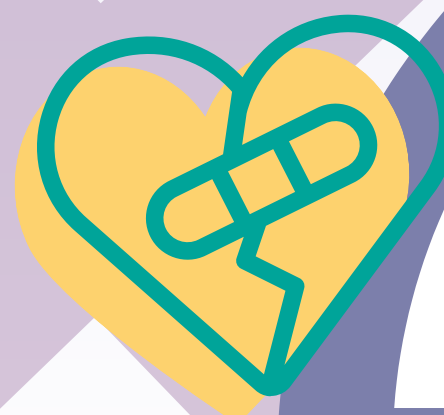
79%
had a reduced
risk of engaging
in oppositional
behaviors at
the end of
services

75%
improved and
maintained
behaviors related
to their ability to
make decisions.

84%
improved or
maintained
positive school
behaviors

85%
improved or
maintained their
school attendance

75%
displayed a healthy
adjustment to trauma
upon ending services





83%

of individuals felt their relationship with their **family** was a strength after services ended



220

connections were made to family members or other adults in a youth's life in our Destination Family Program

152

youth were placed with stable, loving families

77%

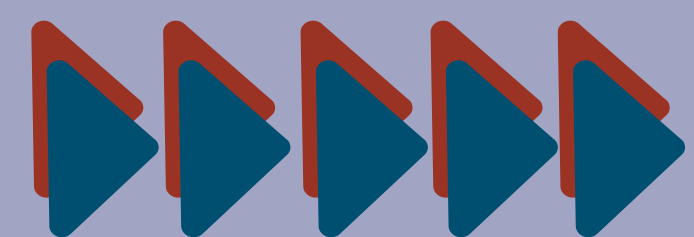
of individuals could identify the presence of natural supports in their life after services



OUR WORK: FAMILY CONNECTIONS



Family Connections looks at stable placements and the presence of supports through our Permanency programs (Pathways to Permanency and Destination Family), as well as CANS-50 data in order to see how many individuals served consider their family to be a strength at the conclusion of mental health services.



OUR WORK:

FAMILY & YOUTH EMPOWERMENT



Family & Youth Empowerment programs and stats focus on individuals who have been empowered by parent partners to ensure they have voice and choice in services or through out mentoring program, serving youth impacted by foster care by connecting them with consistent, caring adults. CANS-50 assessments also identify those who indicated a presence of resiliency and empowerment by the end of services.



63

individuals participated in our annual **Wonder camp**

87

matches with **mentors** in Wonder program

500+

individuals served through **Empowerment Training Center**

81%

exemplified **resiliency as a strength** upon exiting their program



90%

of individuals discharged from CSEC services were **not at-risk for homelessness**



Empowerment Training Center

The SSYAF Empowerment Training Center (ETC) is a workforce development program that is uniquely designed to strengthen skills and development of employees locally, statewide, and nationally.

- 26 community trainings provided to service providers and community partners
- Over 500 participants reached



Feedback

- “Very thorough and detailed information in the training and training materials.”
- “A wealth of information preparing one to navigate a complex situation. Panelist were very informative. Appreciated the lived experience view.”
- “The content was very relevant and helpful! I loved the opportunity to hear from others, and it was very validating as every situation brought up was something that I am currently or have dealt with.”
- “Interactive and informative.”

Participants scored the overall training:

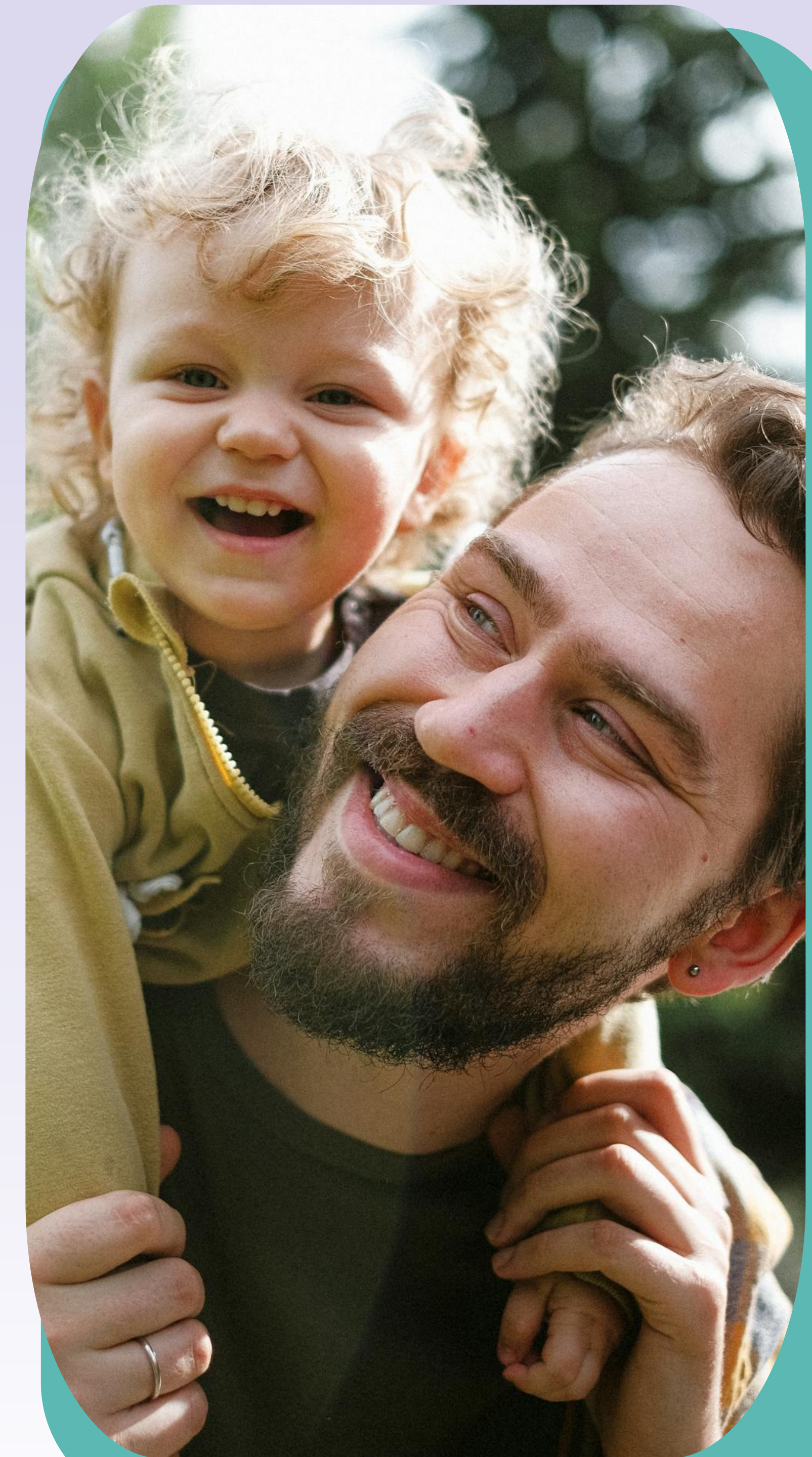
4.8

out of a possible 5 points

On average, participants reported their knowledge level of the topic increased:

4.4

out of a possible 5 points





AGENCY IMPACT EXPANSION

Juvenile Justice Prevention Services - Wraparound

Program Goal: A prevention and intervention program that provides flexible, individualized, dynamic wellness services to youth with juvenile justice involvement. The program focuses on community protection, reducing recidivism, client accountability, and improving youth and family functioning.

Total Clients Served: 9



Juvenile Justice Prevention Services - FFT

Program Goal: A prevention and intervention program that provides flexible, individualized, dynamic wellness services to youth with juvenile justice involvement. The program focuses on community protection, reducing recidivism, client accountability, and improving youth and family functioning.

Total Clients Served: 11



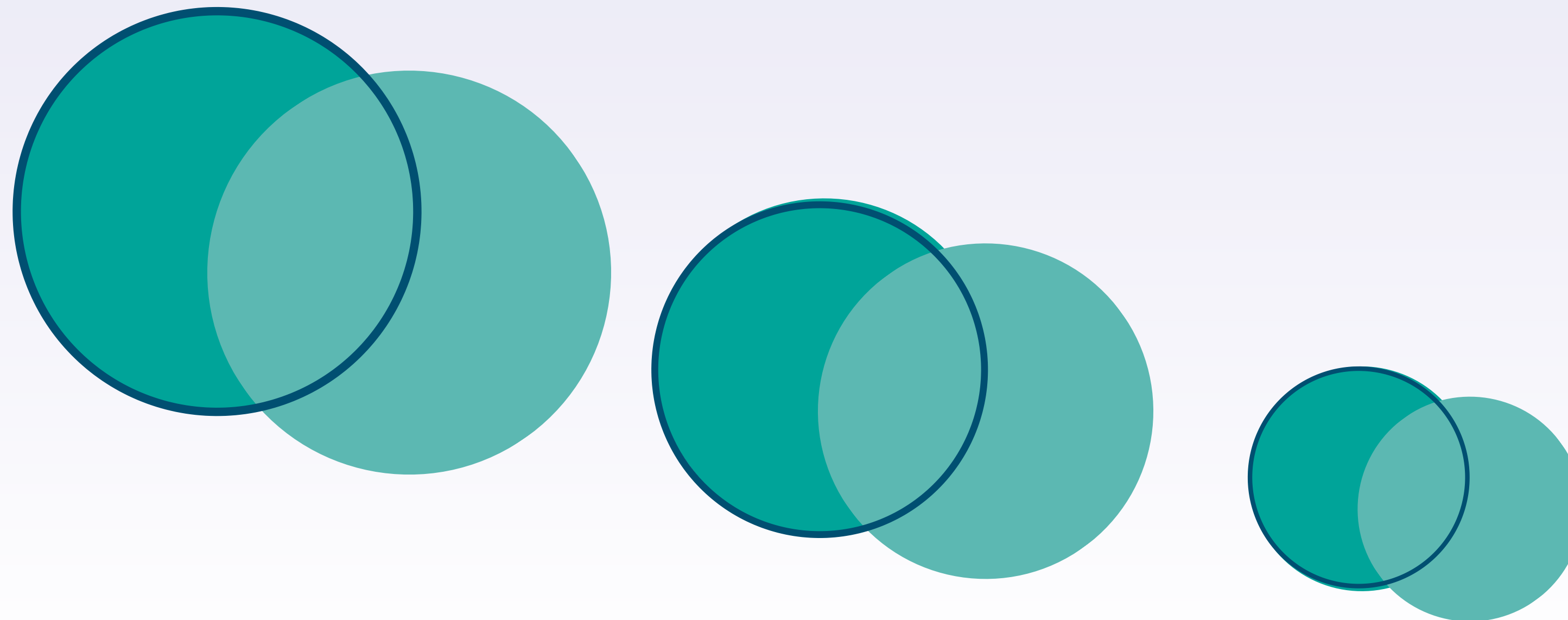
AGENCY IMPACT EXPANSION



Parent Partner Services - Solano

Program Goal: To engage youth and caregivers more fully in their case planning and services process, and to help them understand their rights and responsibilities. Family finding and appropriate linkage to resources are also provided to youth and caregivers.

Total Clients Served: 8



AGENCY IMPACT EXPANSION

Enhanced Care Management

Program Goal: Enhanced Care Management (ECM) is a care coordination benefit for medical beneficiaries that supports children with high needs where social and emotional conditions have a profound impact on health development. The goal of ECM is to align multiple systems serving children in partnership with their families & caregivers and provide comprehensive care management to support coordinating their health-related care and services in a person-center care manner. ECM provides Outreach & Engagement, Comprehensive Assessment & Care Management Plan, Enhance Coordination of Care, Health Promotion, Comprehensive transitional Care, Member & Family Supports, and Coordination of Referrals.

Total Clients Served: 9



Community Support

Mission Moments

Mission Moments: Flexible Integrated Treatment

A youth was referred to FIT Sacramento program in the wake of her parents' separation. Her mother reported that the youth's mood swings and irritable behavior had escalated into depressive episodes and vague threats of suicide as both parents moved forward with new romantic partners, caught in the midst of new and complicated family dynamics, exacerbated by the stressors brought on by the pandemic. The youth outwardly expressed her frustration through outbursts and arguments, while also internalizing her emotions to the point where it disrupted her sleep patterns. It was impacting her relationships with her parents and siblings, no longer feeling as close with her father after the separation and the escalation in her attention-seeking behaviors caused concern for her mother



A CANS 50 assessment was conducted to identify the youth's specific areas of need for intervention support as Anger Control, Impulsivity, Depression, Oppositional, Family Functioning, Living Situation, Sleep, and Emotional and/or Physical Dysregulation. These were the targeted areas of focus for services, each of them interfering with her overall functioning and symptoms.

The youth engaged in either weekly or biweekly therapy sessions while she learned to identify and express her thoughts, feelings, and emotions. She developed various coping strategies such as expressing herself through art or listening to music, going out into nature with friends, and feeling comfortable to vent to her caregivers. Through services in the FIT program, the youth learned healthy communication techniques and how to advocate for her needs to her family.



With her new self-regulation techniques, the youth was on track to graduate from high school and received several college admissions. For over a year, the youth has not had any reports of experiencing any thoughts of suicidal ideation, continuing to work on building positive relationships with her parents and navigating complicated family dynamics. Youth felt ready to continue effectively managing her minimal anxiety on her own as she transitions into the next stage of her life. After a little over two years receiving support in the FIT Program, the youth successfully met all her treatment goals and another CANS 50 assessment was conducted as she exited the FIT program with no items rated as an area of need for further intervention and support.

Mission Moments

Mission Moments: RYSE Above

A youth's caregiver submitted a referral to our RYSE Above program out of concern for the youth's inability to cut down on their cannabis use on his own. The frequency of substance use had heavily impacted the youth's functioning in both the home and at school, resulting in explosive outbursts, leaving school, stealing from relatives, and other disruptive behaviors. The American Society of Addiction Medicine (ASAM) treatment criteria was utilized to determine the youth's level of need, indicating Outpatient level support evidenced by using larger amounts than intended, failure to cut down/stop, regular use, cravings, failure to fulfill roles, interpersonal problems, physical danger, psychological problems, withdrawn and tolerance. The CANS 50 assessment identified several areas for targeted services., among those were Difficulty Following Directions, Difficulty Paying Attention and Sitting Still, and Impulse Control. The youth has also been previously diagnosed with Attention Deficit Hyperactivity Disorder (ADHD) and Oppositional Defiance Disorder (ODD), which was incorporated into his comprehensive treatment plan by the team.

The RYSE Above clinician assigned to the case implemented exercises that focused on mindfulness, deep breathing, and asserting boundaries were effective in helping the youth better manage his outbursts, and time management and organization skills increased his motivation. When he expressed an interest in attending community college so that he could become an Alcohol and Other Drug counselor, community resources were offered to help him work towards that goal and promote the youth's future thinking.

The youth's Alcohol and Other Drug (AOD) counselor utilized interventions to foster the youth making thoughtful decisions about his cannabis use and identify the triggers that resulted in him using it in order to develop alternative coping skills. After a little over a year of receiving services, the youth had successfully completed all AOD requirements as part of his case with Sacramento County Juvenile Probation. He graduated high school and started taking his medication consistently and advocating for his own mental health and needs.



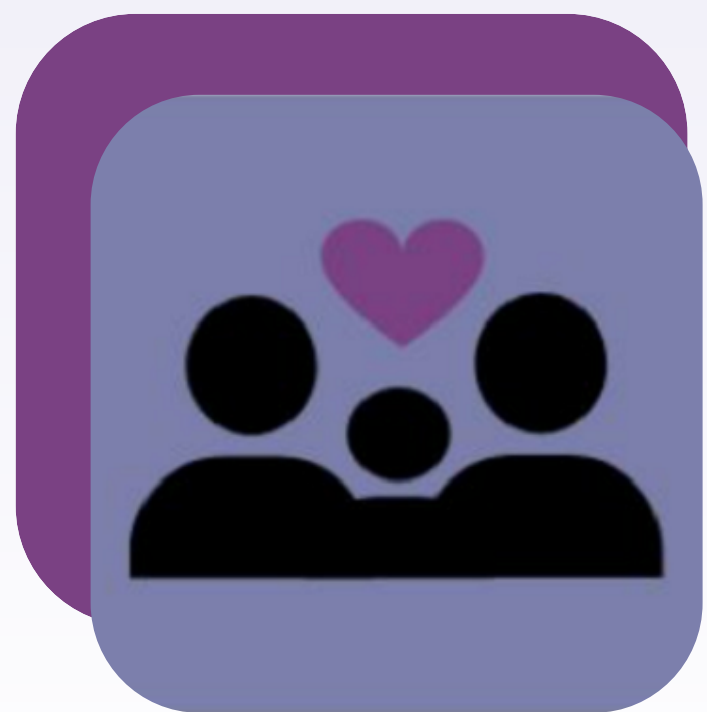
Mission Moments

Mission Moments: Parent Partner Services (PPS)

When a child was removed from their mother's care due to negligence, their father came forward to El Dorado County Department of Child Welfare Services and sought reunification services with their child. The Father didn't have physical rights to his child, so Child Protective Services (CPS) opened a case for him so he could initiate the reunification process with the child.

PPS utilized the Transitional Readiness Scale (TRS) to identify what the father's needs were when first being referred to our program by Child Welfare Services. His low scoring areas indicating need for intervention support were in Navigating Community Resources and Managing Crisis. Initially the father had issues making it to meetings and appointments due to car maintenance challenges, but the Parent Partner supported the father by linking him to community resources in order to repair his car. With his car able to be repaired, the father became more mobile, attending all appointments as needed and demonstrating to Child Welfare Services his ability to meet the needs of his child. The Parent Partner also helped the father establish healthy boundaries in his relationships, especially in learning skills to engage in co-parenting with the child's mother.

The father and mother successfully reunified with their child, putting the skills they learned through working with a Parent Partner into practice going forward independently.



Mission Moments



Mission Moments: Pathways to Permanency

A referral came through Placer County for a youth who had been initially removed from the care of her parents due to reports of domestic violence. Her biological family struggled with establishing healthy and appropriate boundaries, and as a result the youth had developed defiant and aggressive behaviors. A non-relative placement was requested while the birth mother separated from the birth father for their safety. The youth experienced a change in placement, however, and was moved into a Pathways to Permanency resource family home.

Placer County completed an Ages and Stages Evaluation for the youth and determined that she was behind in speech and language. Throughout the duration of her placement with our agency, the youth was enrolled in Sprouts Trauma Informed Preschool. It provided an environment of structure and stability for the youth while working to address her emotional, functional, and family needs. The resource parent was a single-parent household, but she had assistance from her parents and a friend from church in securing additional childcare and other supports. The resource parent was also supported by the foster family agency social worker and Court Appointed Special Advocate (CASA) worker throughout the process, actively encouraging reunification efforts and maintained a positive relationship with the birth family throughout placement.

The youth successfully reunified with her birth mother on within one year of when she was temporarily removed from her birth mother's care. The resource parent maintains contact with the birth mother and youth, continuing to care for the youth in her home one to two nights a week as a newly developed natural support and as a way to provide on-going support for her and her mother.



Mission Moments

Mission Moments: Juvenile Justice Intervention Services (JJIS)

Our JJIS program received a referral for a youth from Sacramento County Juvenile Probation. Upon entering the program, he appeared closed off, having built up a lot of walls to contain his emotions, oftentimes swallowing his anger and pain to the point of feeling trapped by them and on the verge of explosive outbursts when faced with triggering situations. Through observation and the use of the CANS 50 assessment tool, JJIS staff identified this behavior as well as Decision Making and Financial Resources as areas to focus on during services.

In the process of working on his goals, the youth and staff also took a deep dive into his culture and heritage as a Tongan American. His culture was a great source of pride and inspiration for him. Together with JJIS staff, he took a deep dive into the four core values of Tongan culture, and especially what it meant for Tongan immigrants as they assimilated and raised their families in the United States. Learning about the values of Tongan men helped the youth establish his role in his own family, as well as better understand mental health in their culture as a whole.



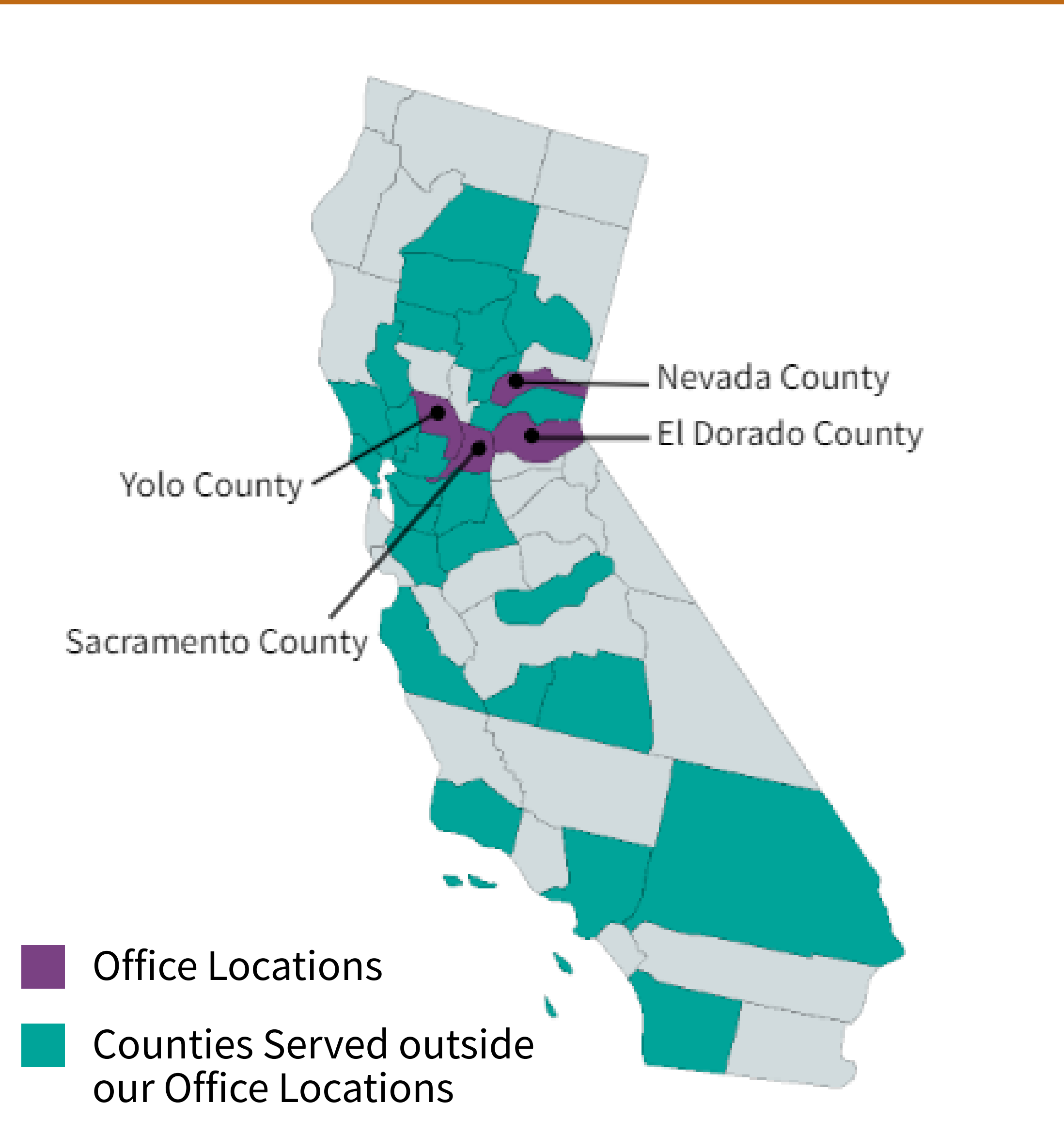
Over time, youth began to open up more with probation staff, expressing when he felt frustrated or needed support after difficult court proceedings. After spending his whole life being told not to talk about his feelings with anyone and to bottle everything up, he took a chance to be vulnerable and requested his probation officer call his JJIS worker when he was struggling and wanted someone he trusted to process what he was feeling with. He began to request more sessions per week, seeking healthier ways to manage his anger and increase positive social behaviors. He was excited to put these skills into practice with his peers in custody, as well as looking forward to engaging in the community and the employment opportunity waiting for him once he's released from custody. The discharge CANS assessment indicated that there were no areas of need for intervention support as he prepared to leave the program after a little over two years of services, overall feeling confident that he can make more positive decisions in life going forward and confide in the people in his life who he trusts.

Who We Serve

A demographic breakdown of individuals we served across all programs.



WHO WE SERVE

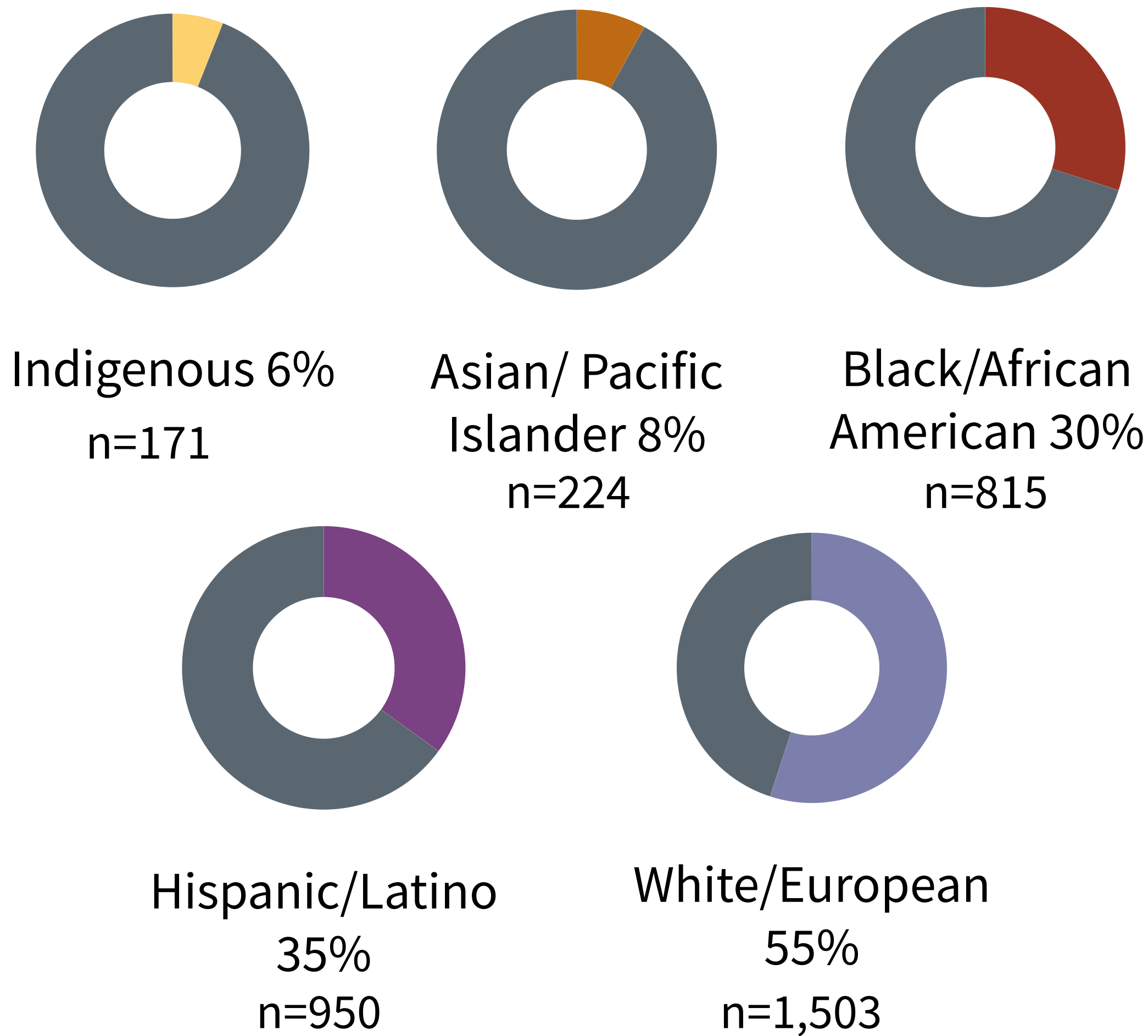


In addition to our program location counties, we served individuals referred from these additional counties:

- Alameda
- Butte
- Contra Costa
- Glenn
- Kings
- Lake
- Los Angeles
- Madera
- Marin
- Monterey
- Napa
- Placer
- Plumas
- San Bernardino
- San Diego
- San Francisco
- San Joaquin
- Santa Barbara
- Santa Clara
- Shasta
- Solano
- Sonoma
- Stanislaus
- Tehama
- Tulare
- Yuba

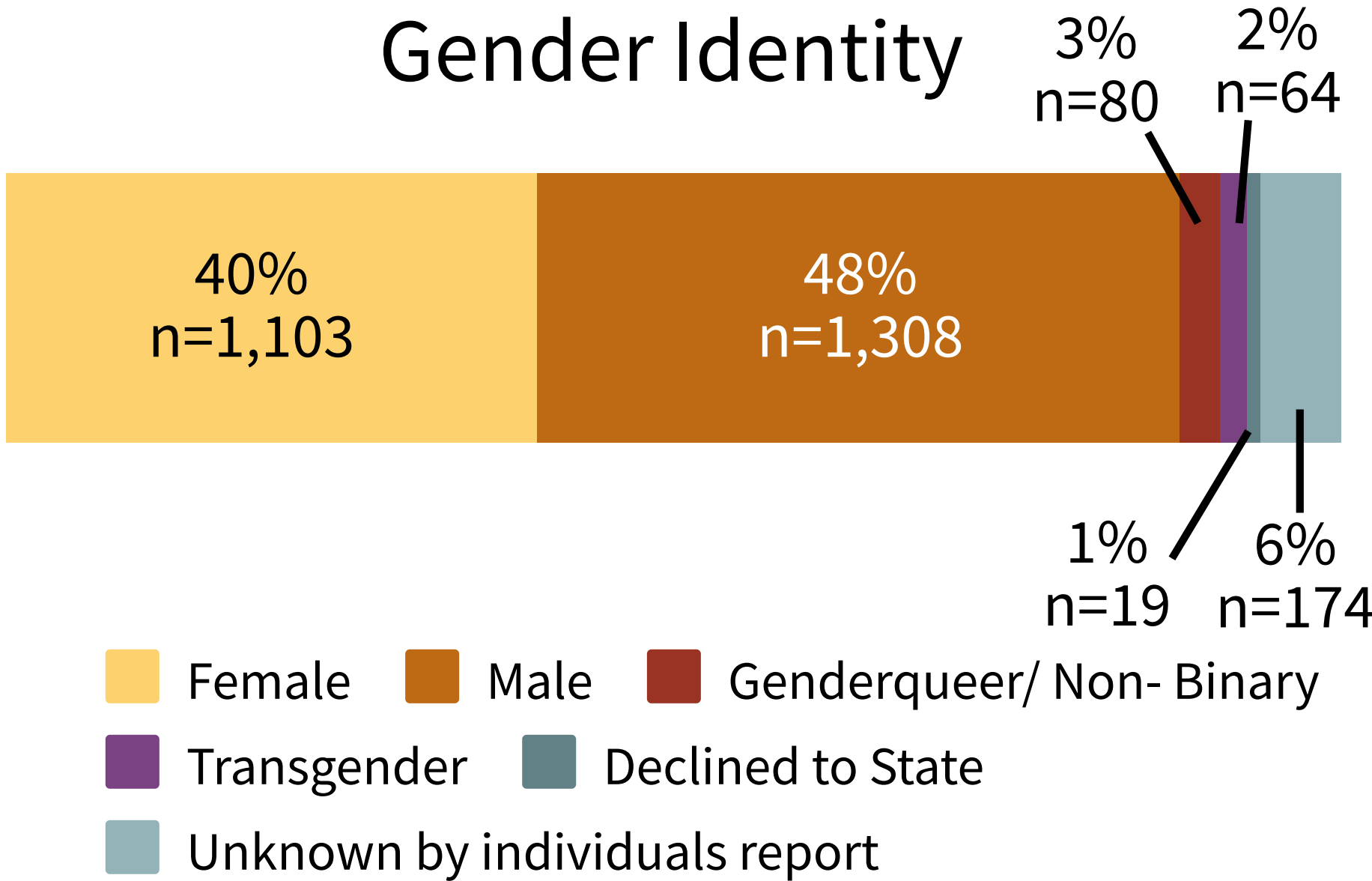
WHO WE SERVE

Race & Ethnicity

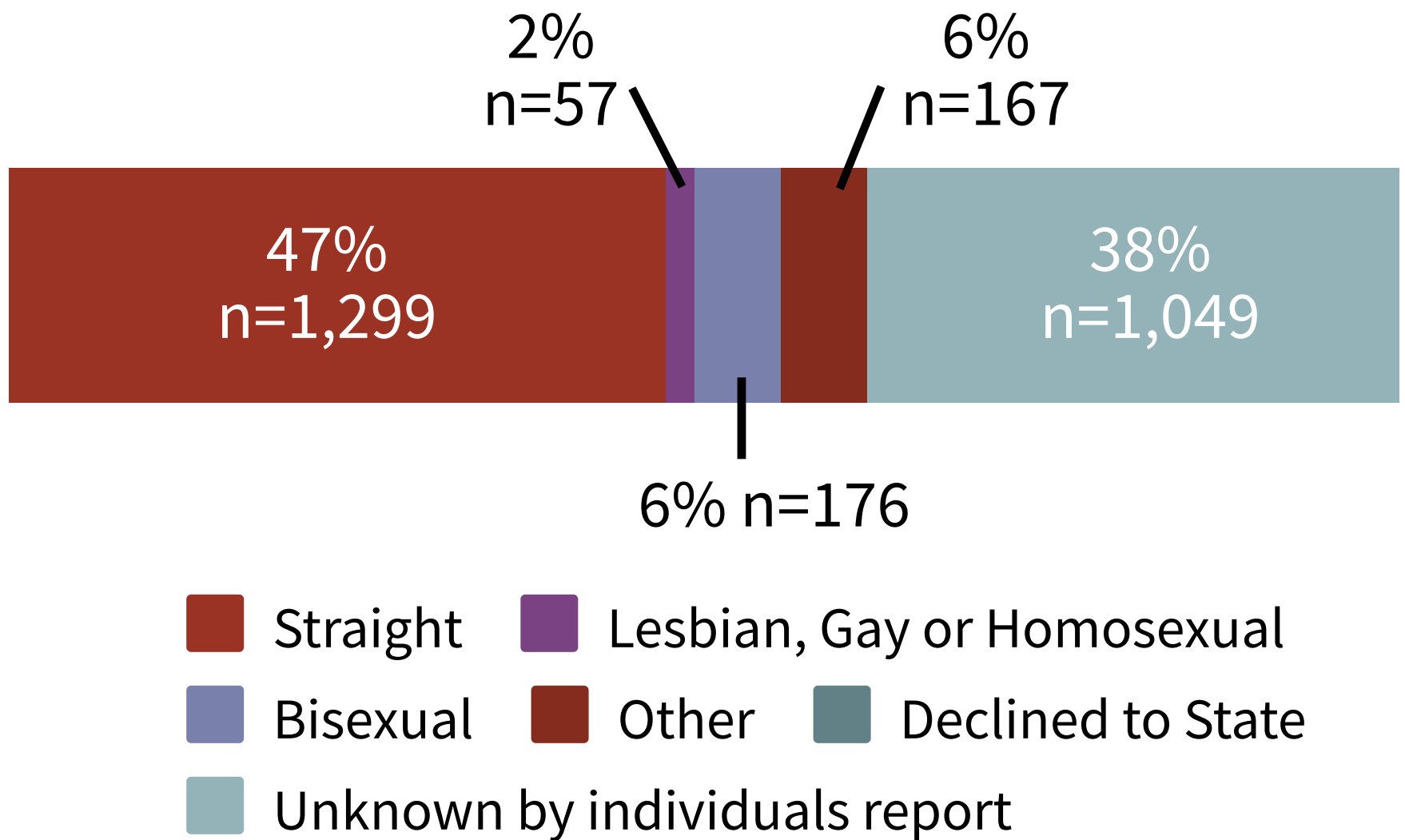


*2% (n=68) of individuals declined to state/ did not know
*34% (n=931) of individuals chose more than one race/ethnicity.
*Percentages will not add up to 100% as this includes individuals who have identified as being more than one race/ethnicity.

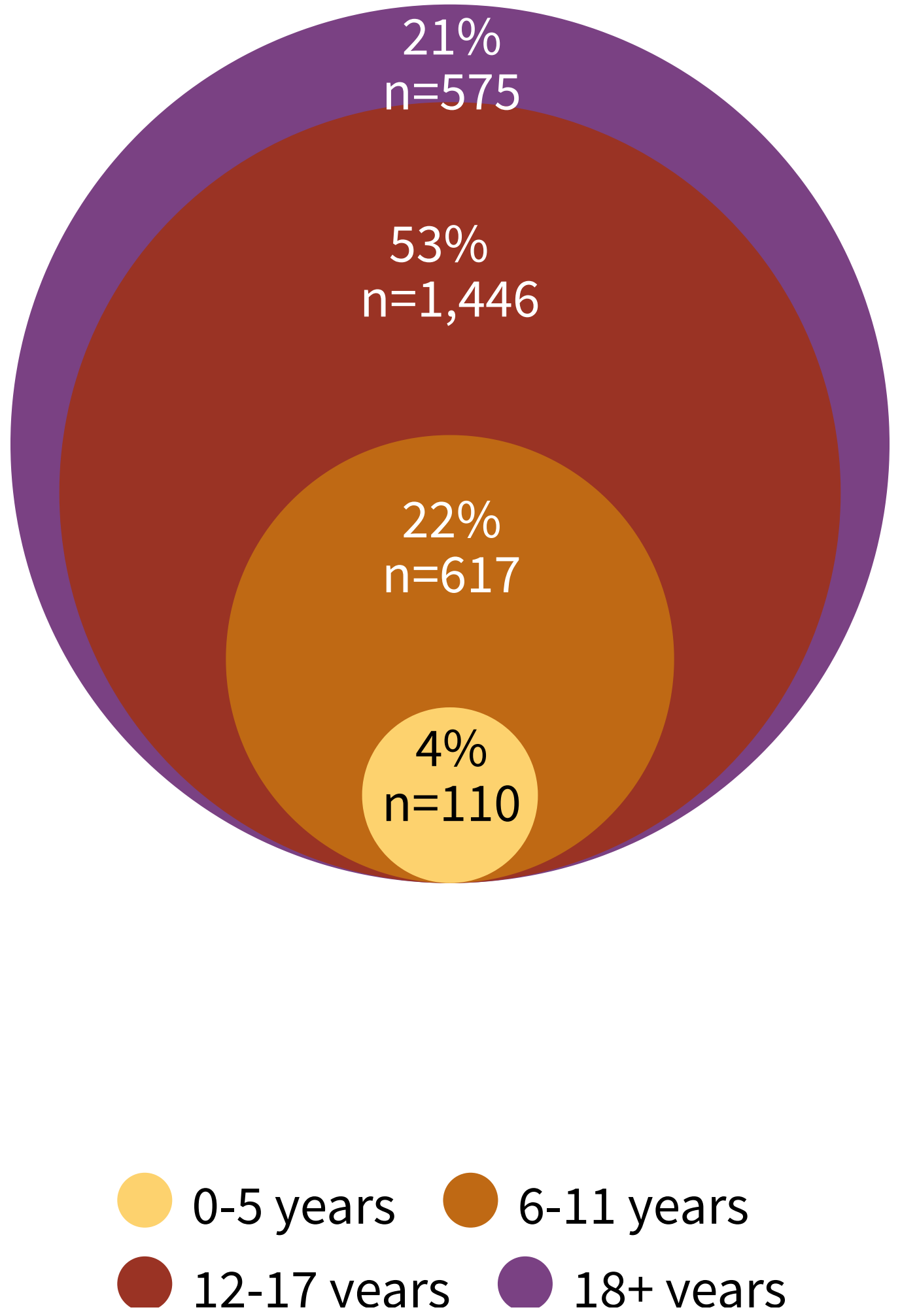
Gender Identity



Sexual Orientation



Age of Individuals



WHO WE SERVE

Staff to Individual Comparison: Race/Ethnicity

Equity

We strive to be fair and impartial by providing access and opportunities to be as healthy as possible. We work to eliminate disparities that adversely affect marginalized groups by reducing barriers and increasing access to behavioral/mental and social services.

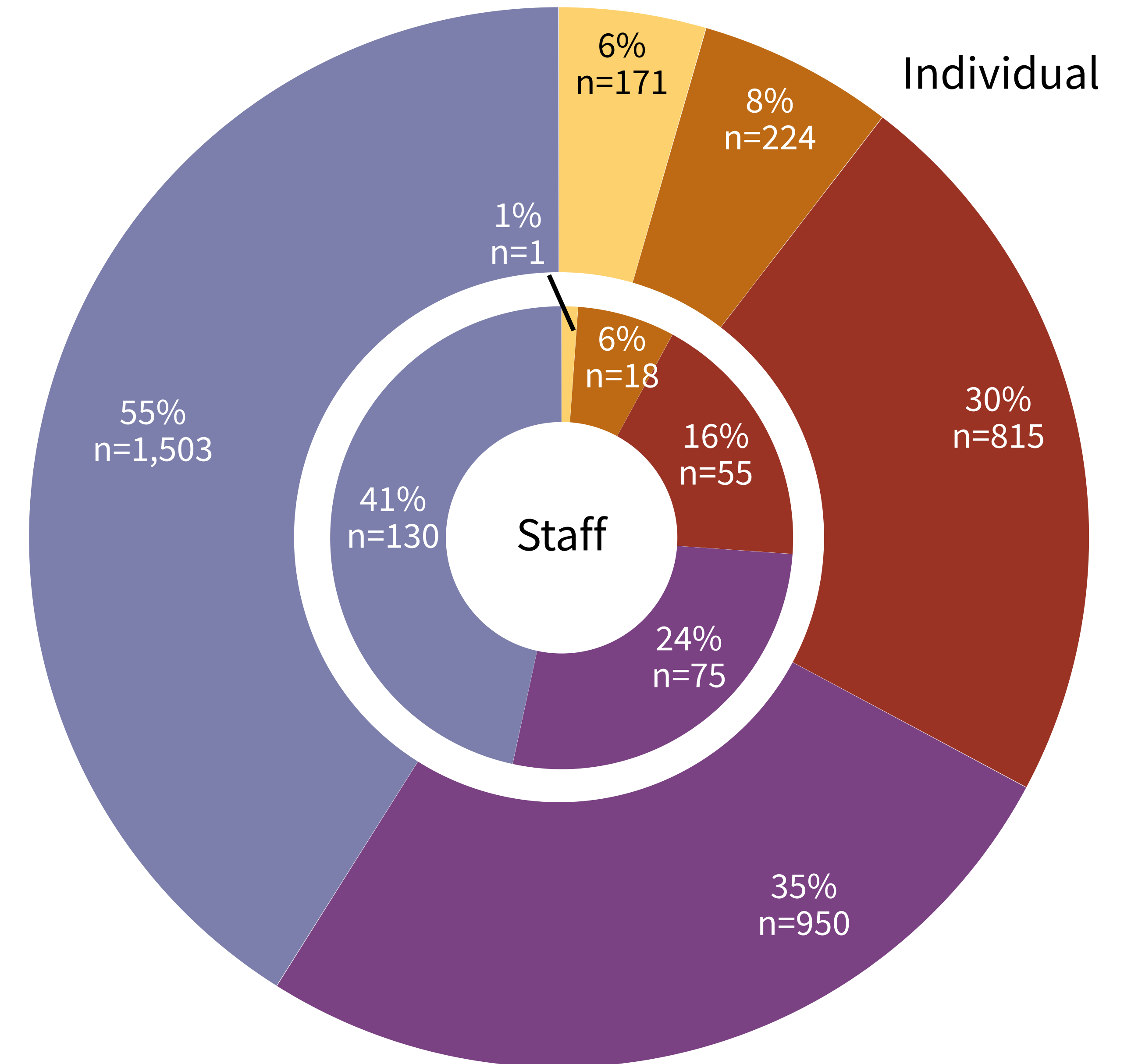


*2% (n=52) of individuals declined to state/ did not know

*45% (n=1,157) of individuals chose more than one race/ethnicity.

*6% (n=19) of staff declined to state/ did not know

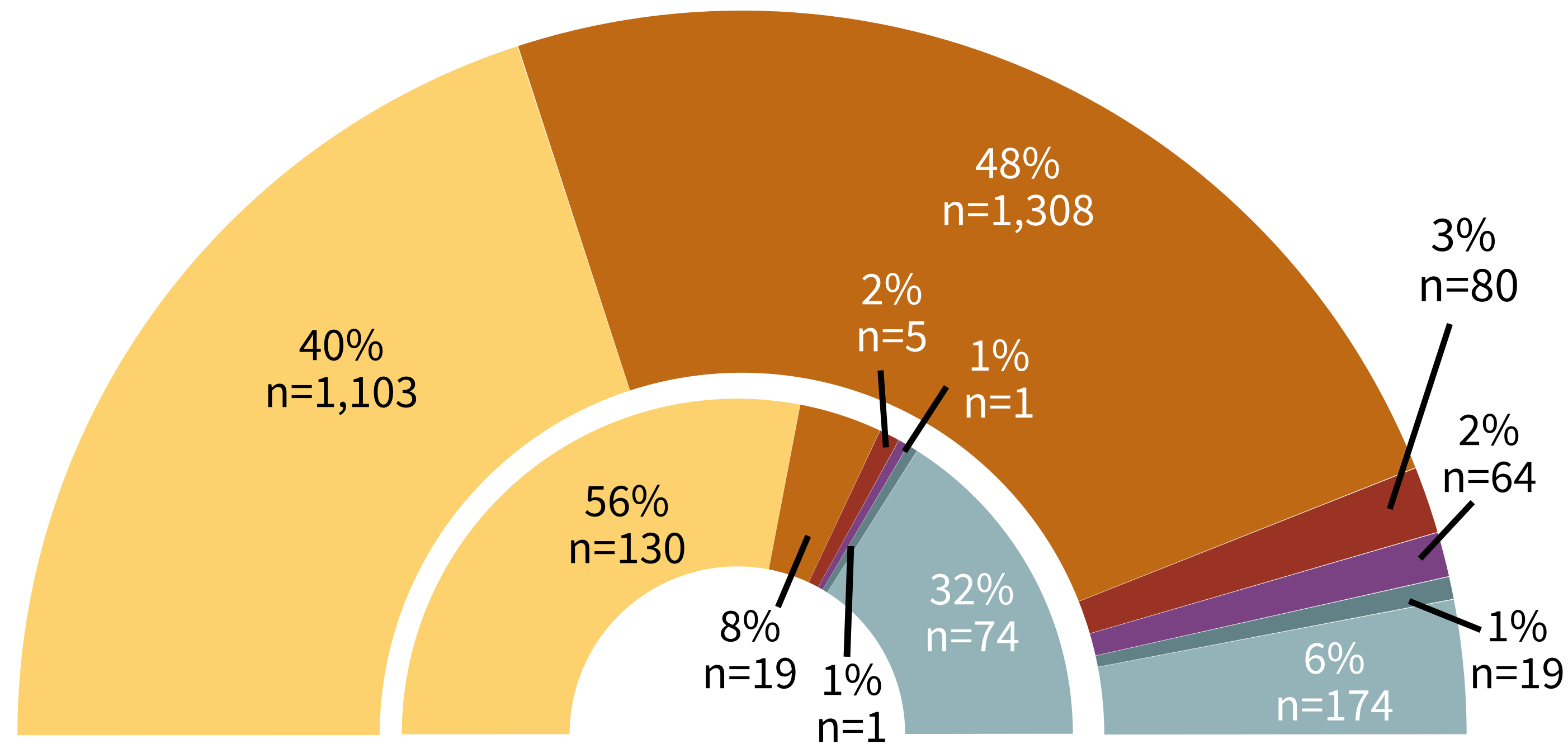
*6% (n=20) of staff chose more than one race/ethnicity.



WHO WE SERVE

Staff to Individual Comparison: Gender Identity & Sexual Orientation

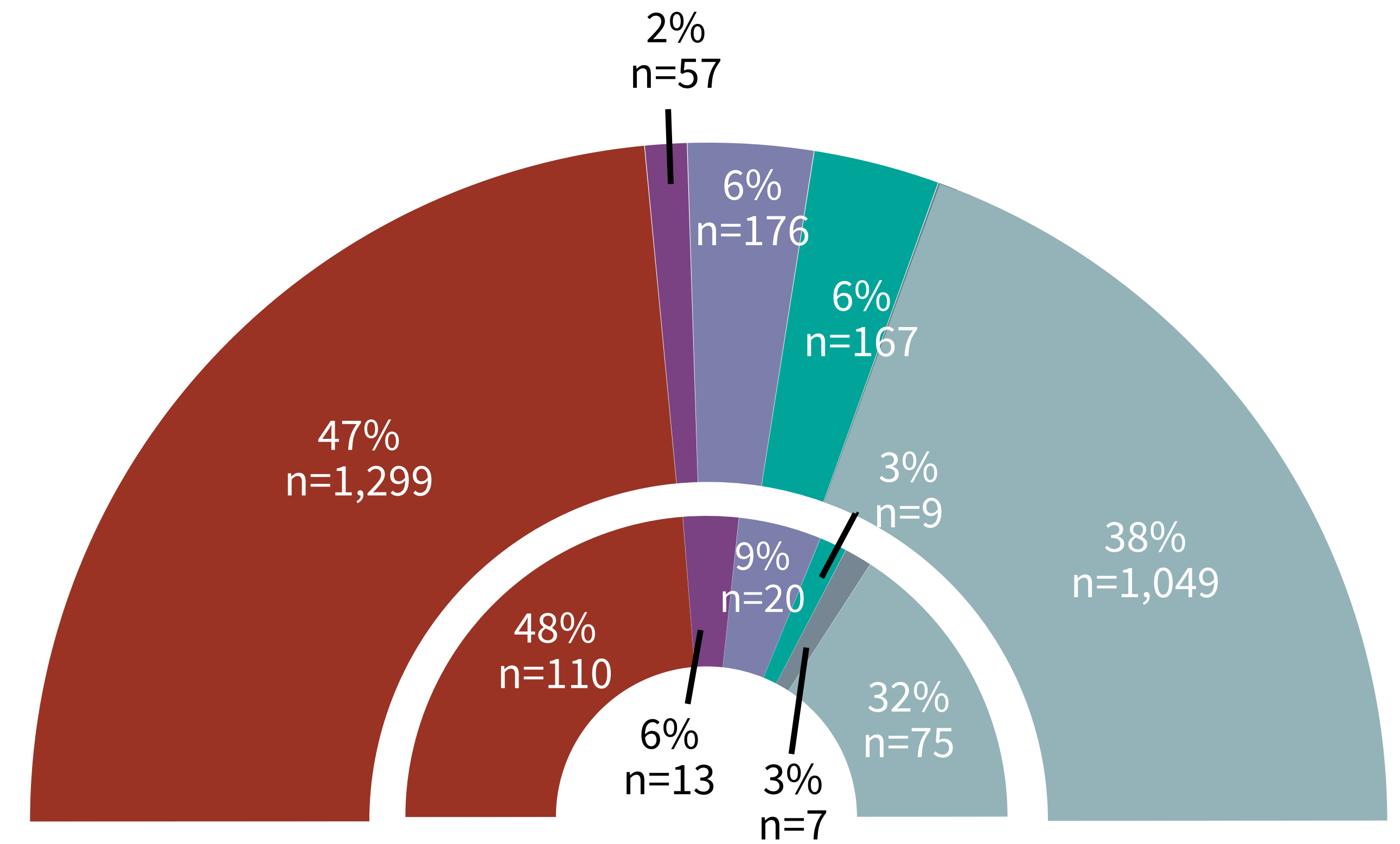
Gender Identity



Individual Staff

Female Male Genderqueer/ Non-Binary Transgender
Declined to State Unknown by individuals report

Sexual Orientation



Individual Staff

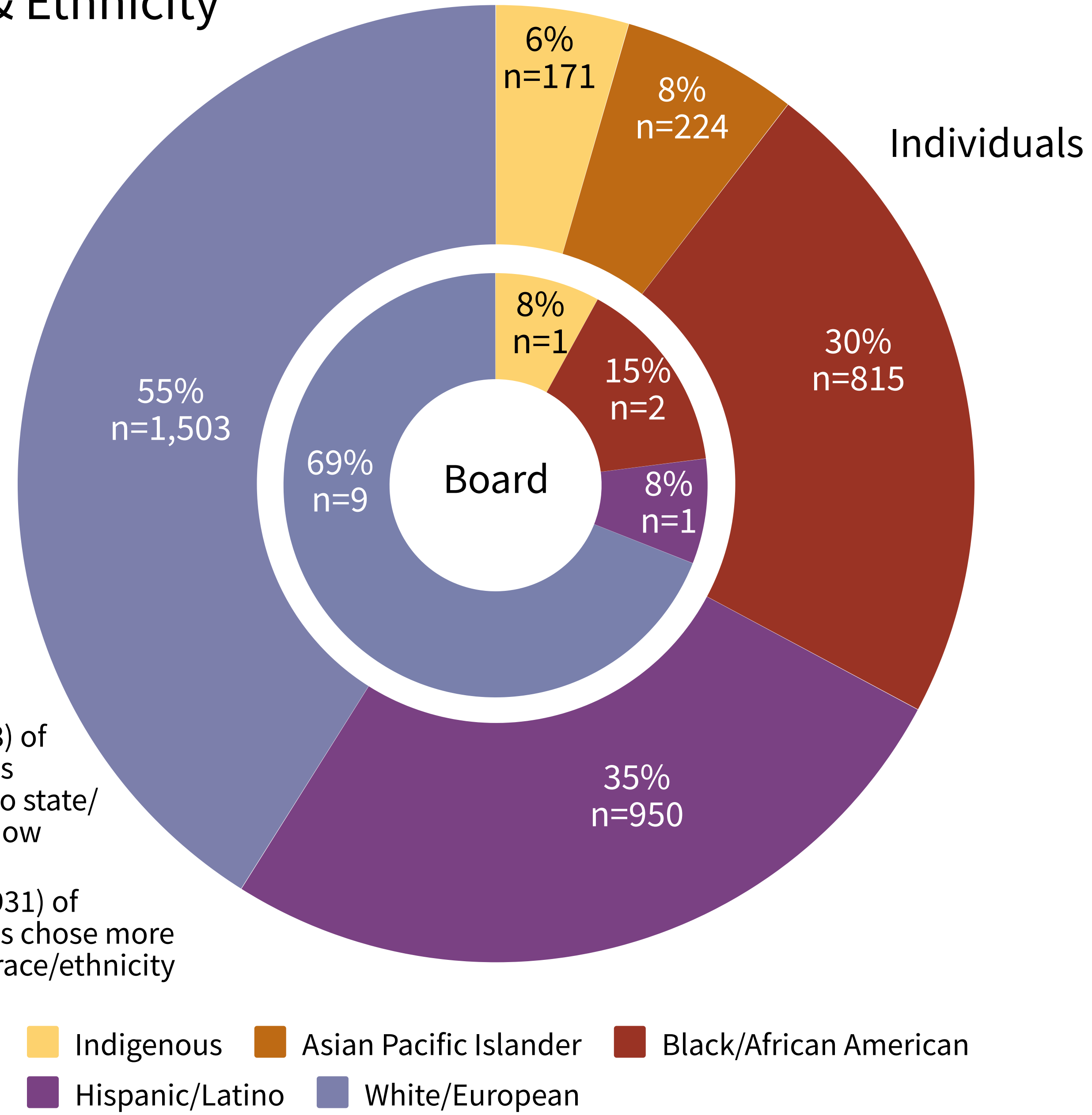
Straight or Heterosexual Lesbian, gay or Homosexual Bisexual
Other Declined to State Unknown by individuals report

*Other consists of asexual, demisexual, pansexual, fluid, queer, questioning, unsure, among other identities

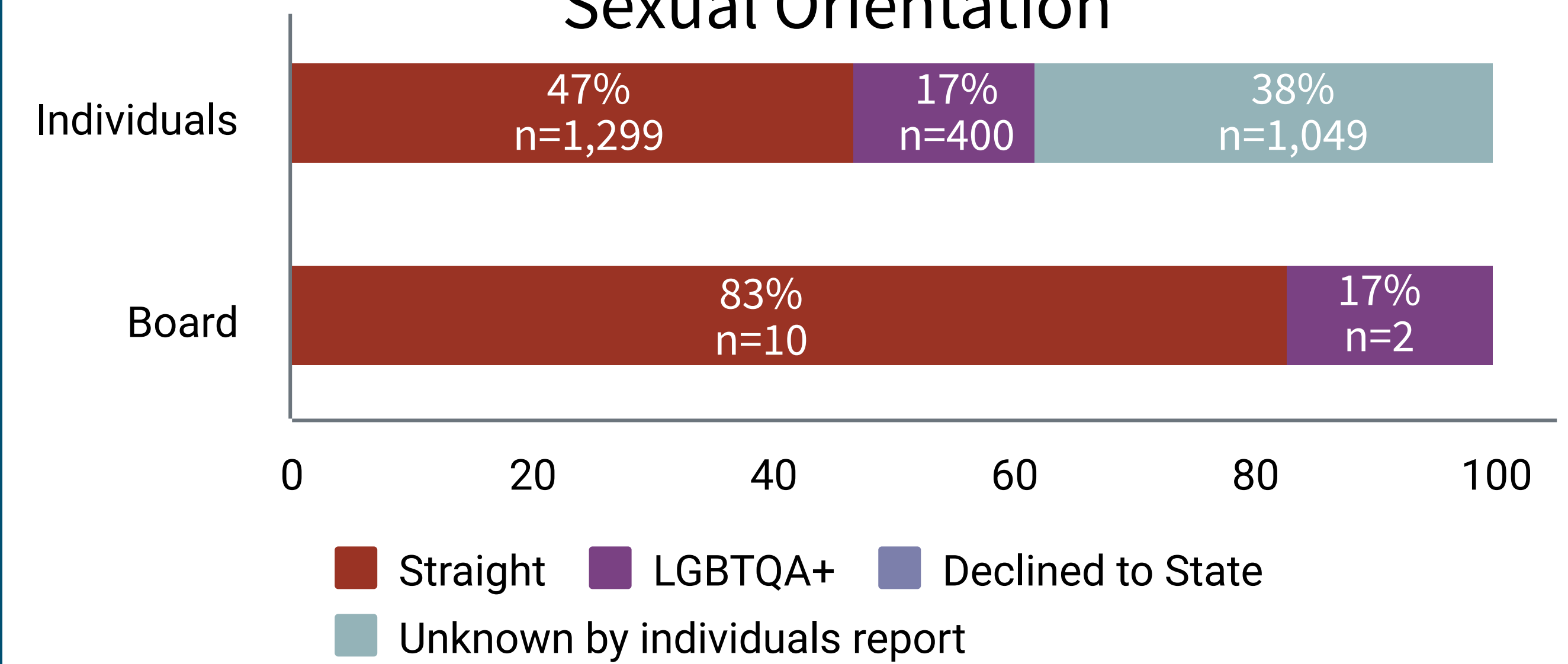
WHO WE SERVE

Board to Individual Comparison

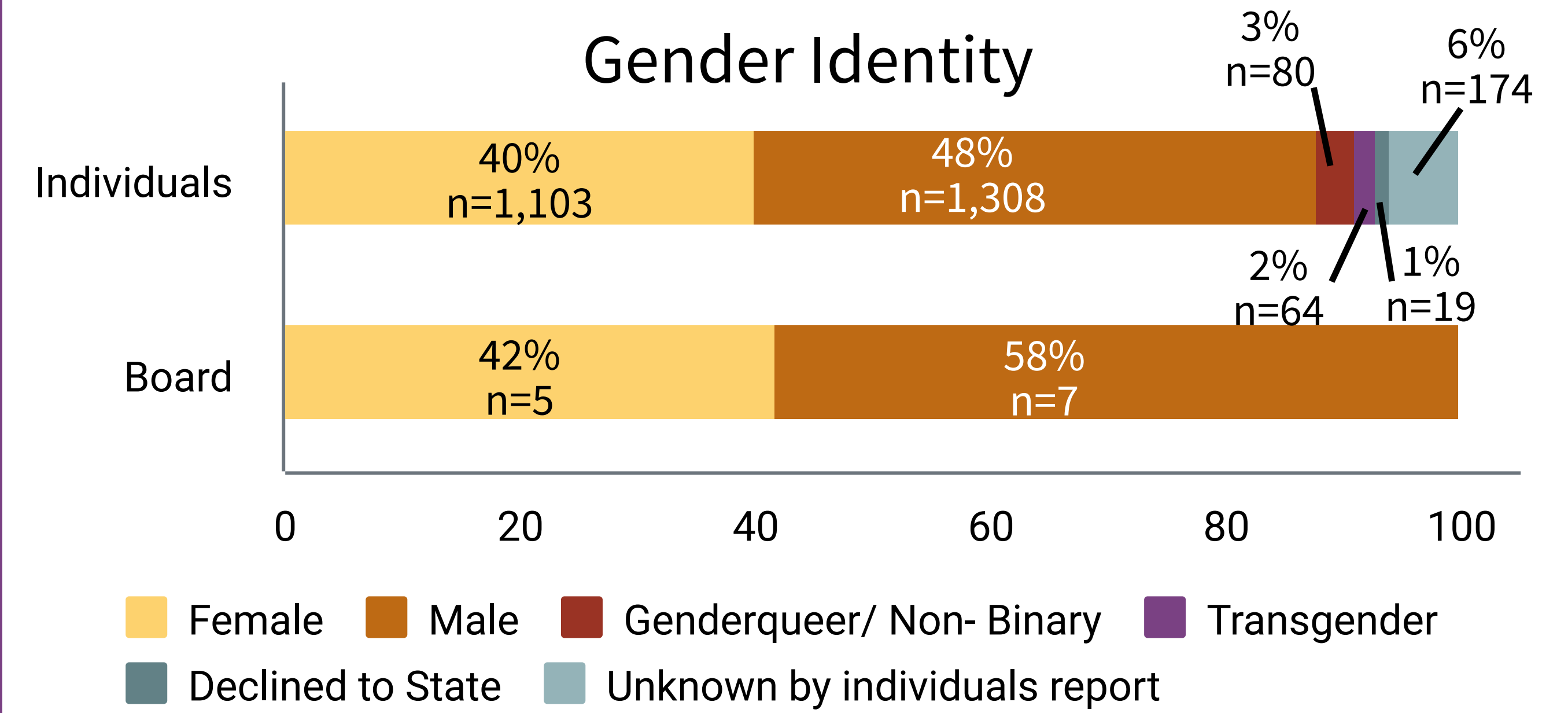
Race & Ethnicity



Sexual Orientation



Gender Identity



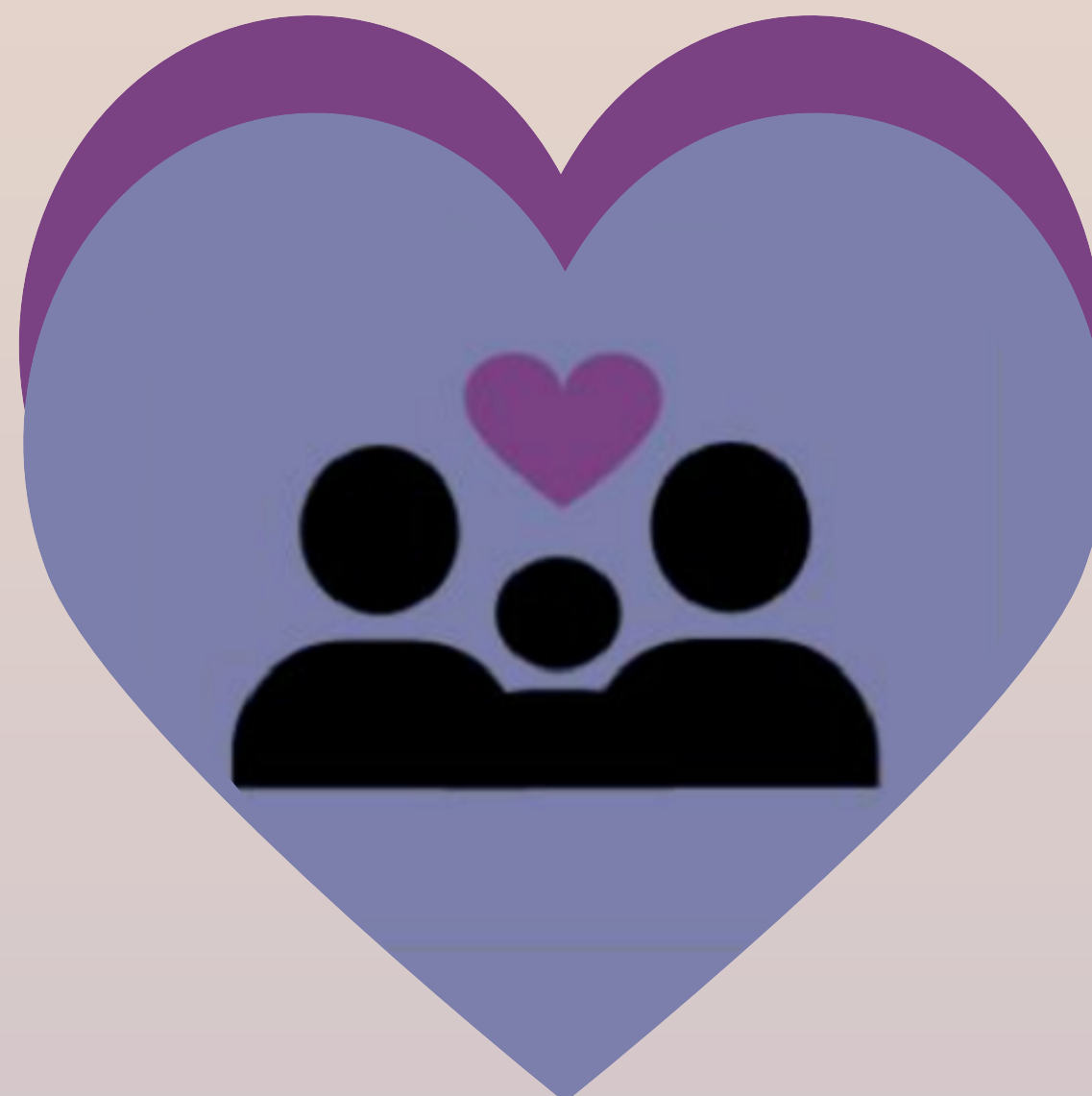
PROGRAM REPORT CARDS

This section looks at each program with measurable outcomes for FY 2023-2024 and highlights noteworthy achievements for the youth served in these programs. The programs are categorized by type, indicated by the icon on the page.

Overall Needs and Strengths are determined at the beginning of the assessment process. Throughout treatment, we are looking to decrease needs and improve or maintain strengths.



Mental Health



**Family & Youth
Empowerment**



**Juvenile
Justice**



Permanency



**Substance Use
Prevention**

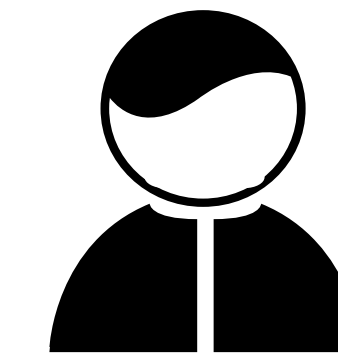
Program Report Card: Community Based Family Services - El Dorado (EDCBFS)



Mental Health

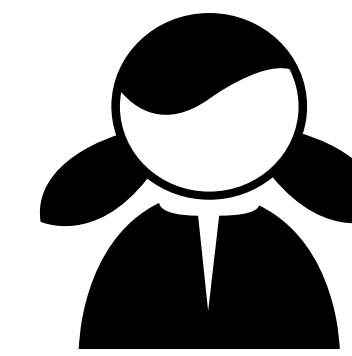
Program Statement

A community-based outpatient specialty mental health program serving El Dorado County Medi-Cal eligible youth and families in their homes or in a community based-setting.



124

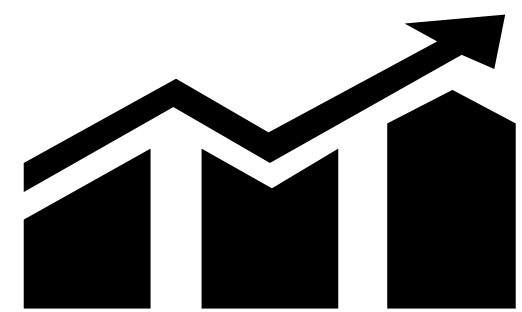
Individuals
Served



**NEW
INDIVIDUALS**

75

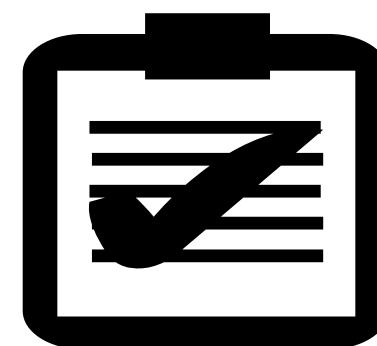
DISCHARGES
55



85%

of individuals made
progress towards their
treatment goals

CANS Scores

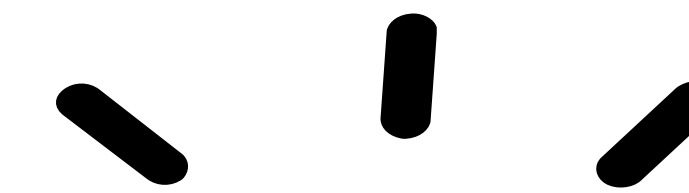


85%

of individuals
decreased Overall
Needs in Mental
Health, Social, and
Risk Behaviors

89%

of individuals
increased or
maintained Overall
Strengths and
Resiliency



Highlights

80%

of individuals
showed
improvement or
maintained a low
level of need in
**school
achievements**

85%

of individuals
showed
improvement or
maintained a low
level of need in
anger control

80%

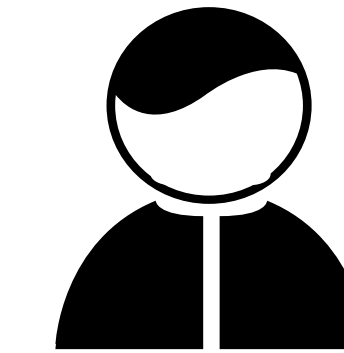
of individuals
showed
improvement or
maintained a
presence of strengths
in **interpersonal
skills**



Program Statement

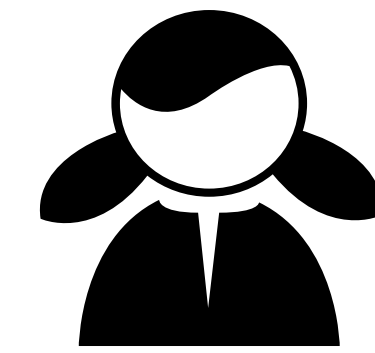
A community-based outpatient mental health program serving Medi-Cal youth in the Napa County School district. The program is co-located at the school site, and services can be delivered at the school, or within the community with the youth and family.

Mental Health



83

Individuals
Served

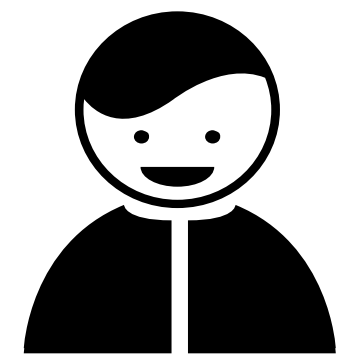


**NEW
INDIVIDUALS**

45

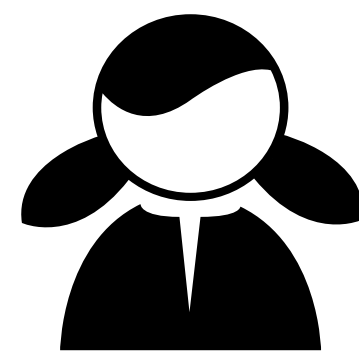
DISCHARGES

51



7

Individuals
Served



**NEW
INDIVIDUALS**

7

DISCHARGES

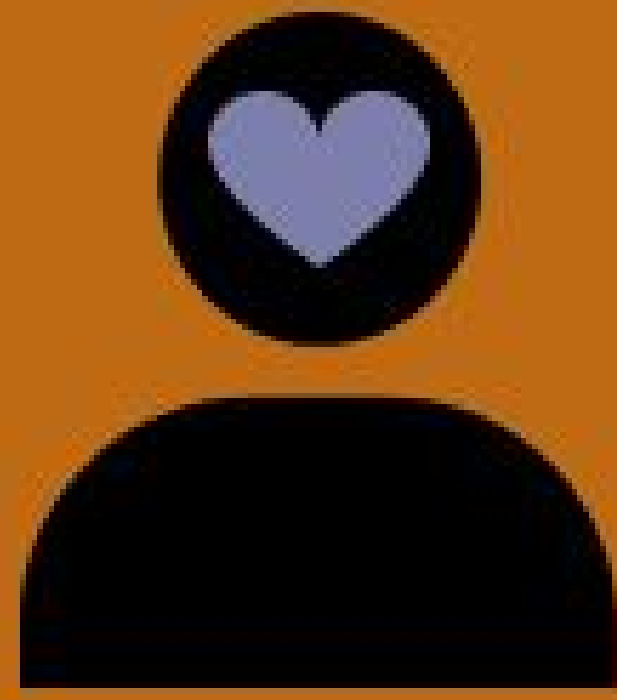
5



Program Statement

A supplemental mental health service that is available to assist Medi-Cal eligible youth who are experiencing stressful transitions or life crises. The program offers one-to-one therapeutic contact between a mental health provider and youth for a short period of time.

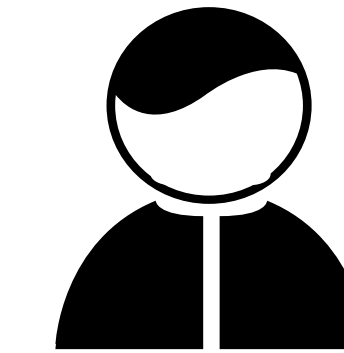
Mental Health



Mental Health

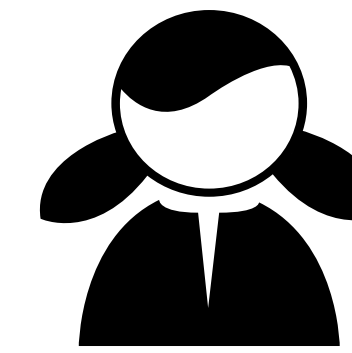
Program Statement

A community-based outpatient mental health program serving Yolo Medi-Cal eligible youth and families. YCBFS has the capacity to serve youth and their families when their clinical needs are subject to an increase or decrease in service intensity.



168

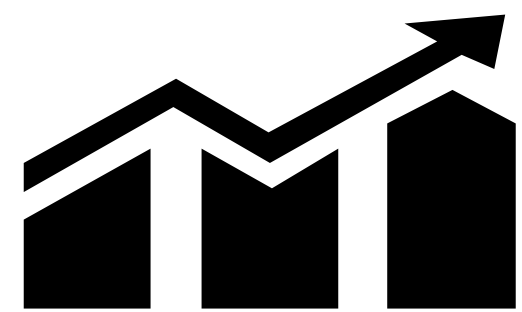
Individuals
Served



NEW
INDIVIDUALS

104

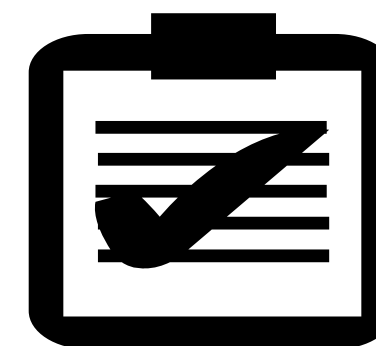
DISCHARGES
46



93%

of individuals made
progress towards their
treatment goals

CANS Scores

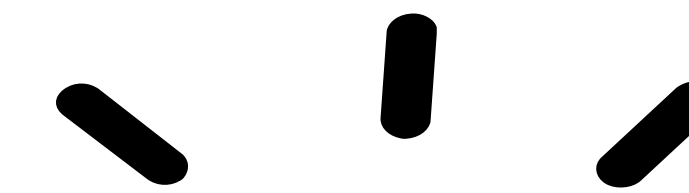


83%

of individuals
decreased Overall
Needs in Mental
Health, Social, and
Risk Behaviors

98%

of individuals
increased or
maintained Overall
Strengths and
Resiliency



Highlights

90%

of individuals
showed
improvement or
maintained a low
level of need in
depression

80%

of individuals
showed
improvement or
maintained a low
level of need in
sleep

88%

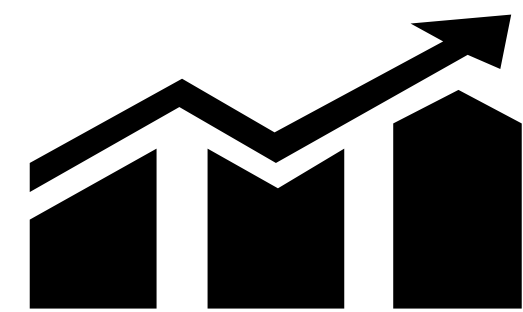
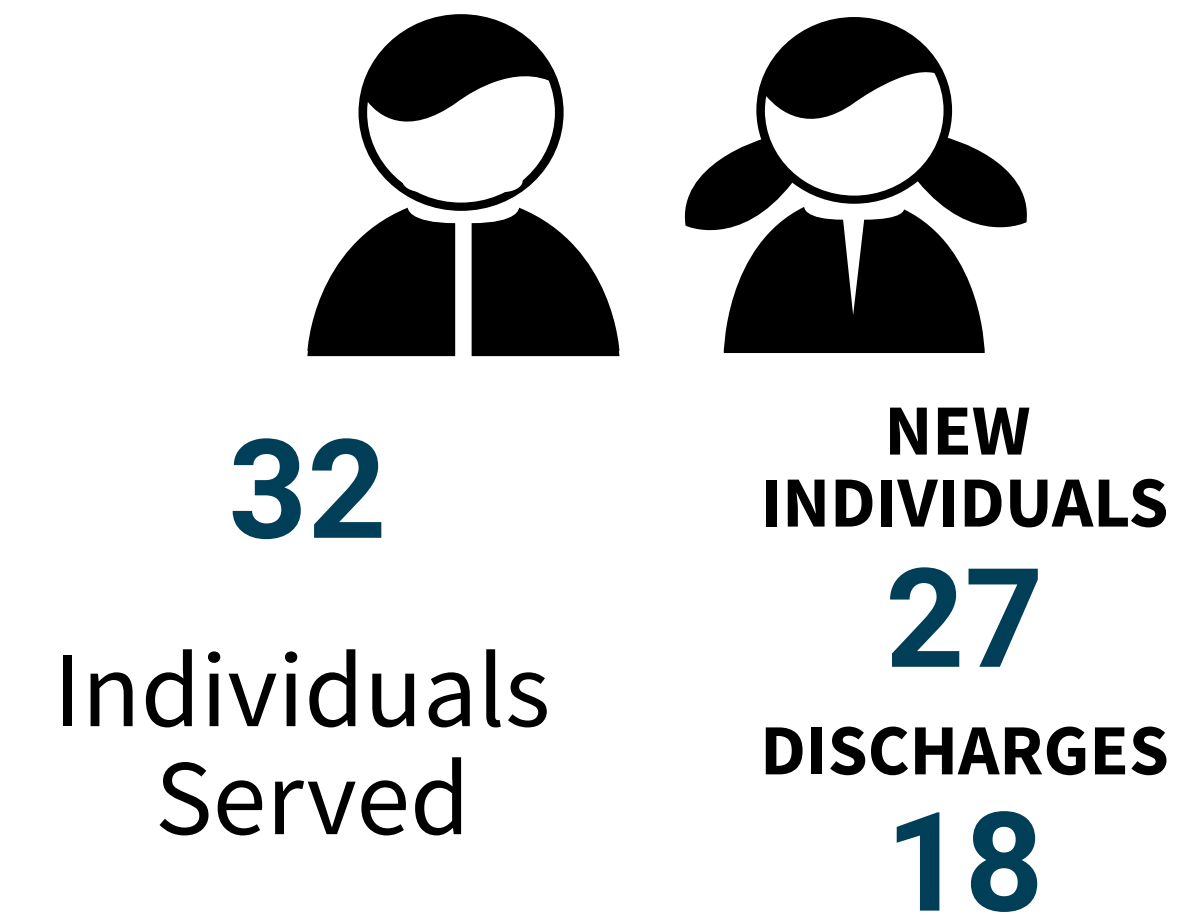
of individuals
showed
improvement or
maintained a low
level of need in
social functioning



Family & Youth Empowerment

Program Statement

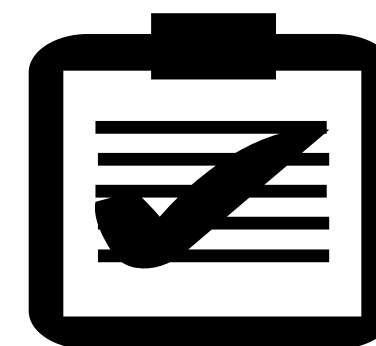
The program blends wraparound planning, mentoring, and positive youth development, as well as integrates a trauma-informed, gender-responsive approach in supporting youth who have been sexually trafficked. Youth Advocates work with CSEC, incorporating the evidenced model Seeking Safety to address the youth's individual needs, while also building upon their strengths, skills, and positive connections to the community.



75%

of individuals made progress towards their treatment goals

CANS Scores

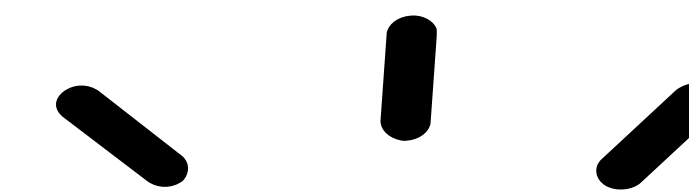


100%

of individuals decreased Overall Needs in Mental Health, Social, and Risk Behaviors

100%

of individuals increased or maintained Overall Strengths and Resiliency



Highlights

100%

of individuals showed improvement with school behavior

100%

of individuals showed improvement in oppositional behavior

100%

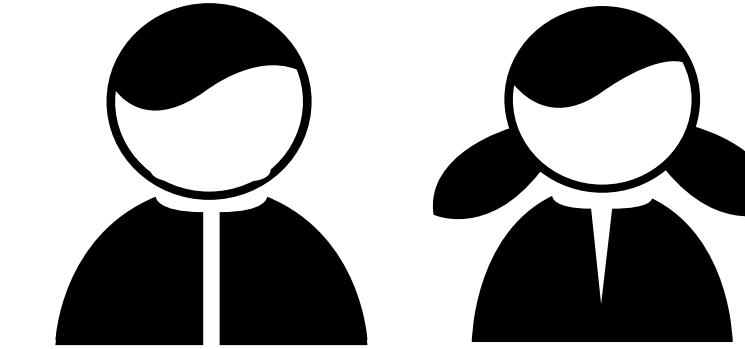
of individuals showed improvement with resiliency



Permanency

Program Statement

A program that finds and supports a family for youth who are living in long-term foster care. The team wraps support around youth to prepare them for a family. The program provides family finding, focused recruitment, and ongoing family supports.



48

Individuals
Served

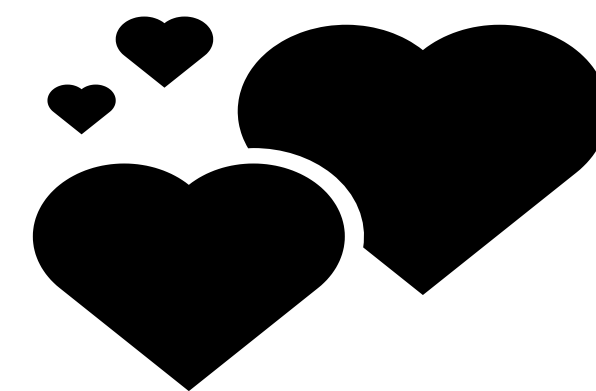


ADOPTIONS

2

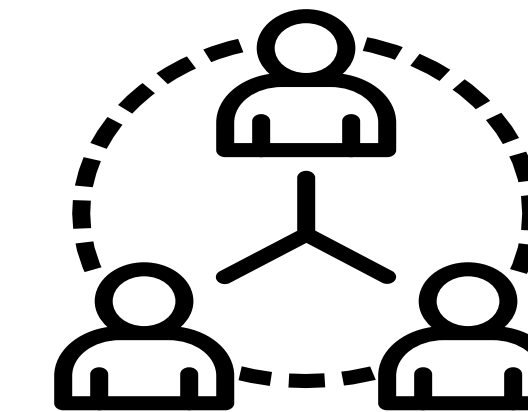
GUARDIANSHIPS

1



220

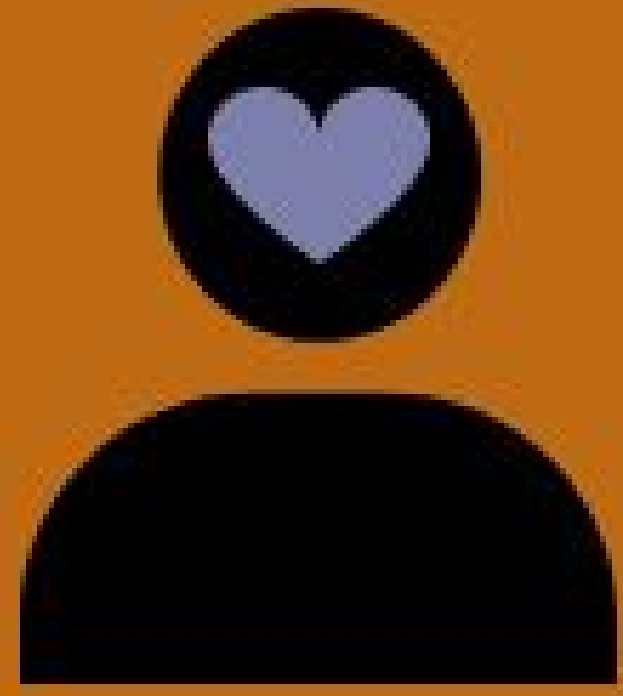
connections were made to family members or other important adults through our Destination Family Program



66%

of all identified supports* were found through the efforts of the Destination Family Team

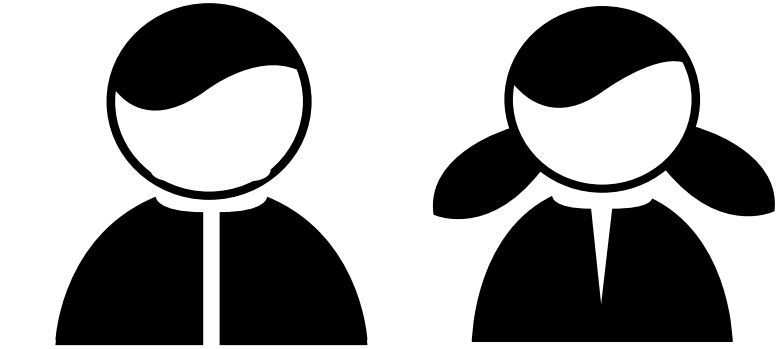
*Supports can be extended family members, adult siblings, or other adults in a child's life



Mental Health

Program Statement

A community-based, outpatient mental health program, that provides mental health services to eligible youth and a wide array of techniques that utilize family and individual strengths to build support. The program aims to build upon the youth's strengths and successes, increase resiliency, reinforce family connections and improve overall mental and behavioral health.



157

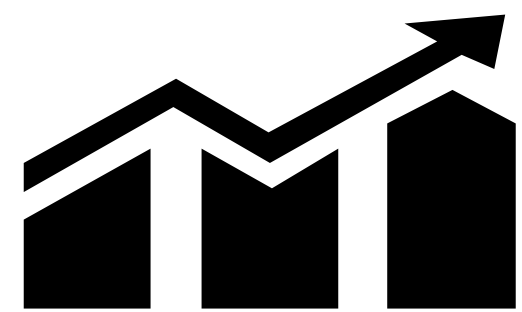
Individuals
Served

NEW
INDIVIDUALS

84

DISCHARGES

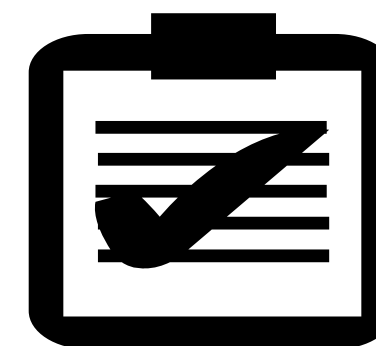
89



92%

of individuals made
progress towards their
treatment goals

CANS Scores

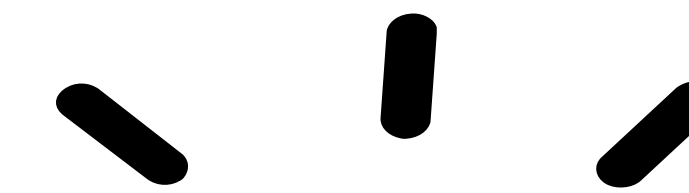


79%

of individuals
decreased Overall
Needs in Mental
Health, Social, and
Risk Behaviors

88%

of individuals
increased or
maintained Overall
Strengths and
Resiliency



Highlights

90%

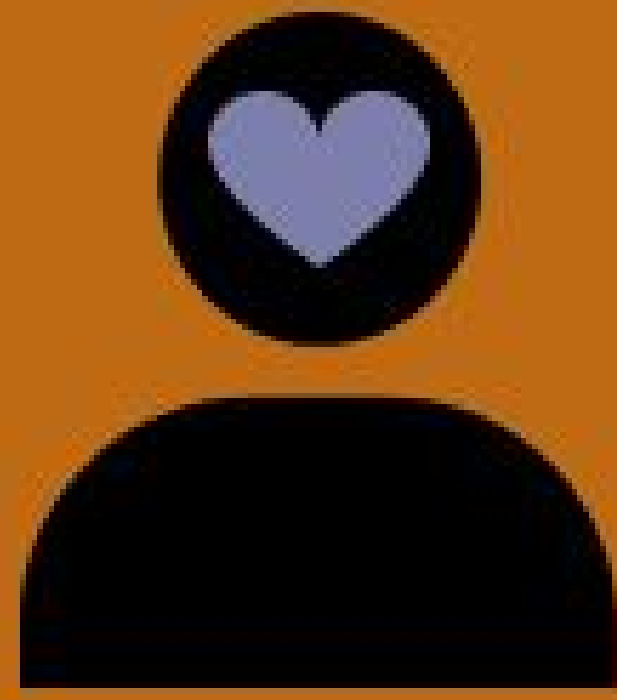
of individuals
showed
improvement or
maintained a low
level of need in
depression

88%

of individuals
showed
improvement or
maintained a low
level of need
with their
anxiety

82%

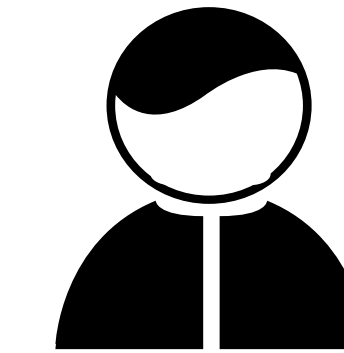
of individuals
showed
improvement or
maintained a low
level of need in
**oppositional
behaviors**



Mental Health

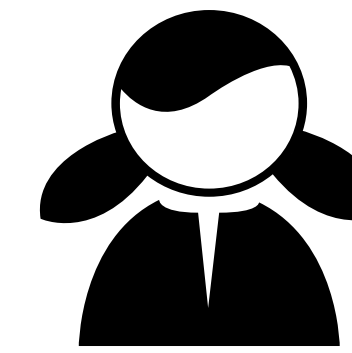
Program Statement

A community-based outpatient mental health program serving Medi-Cal eligible youth and families. The FIT program provides family-driven, culturally competent, strength-based, trauma-informed mental health services and supports to youth and families.



530

Individuals
Served

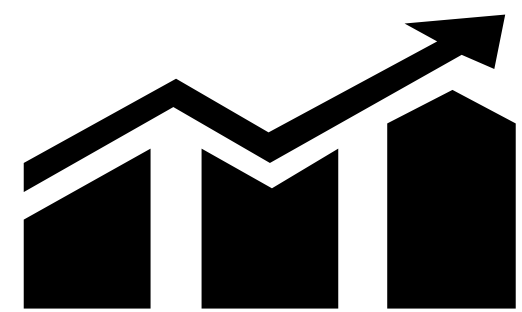


NEW
INDIVIDUALS

255

DISCHARGES

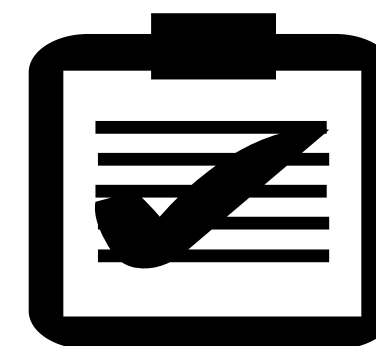
252



88%

of individuals made
progress towards their
treatment goals

CANS Scores

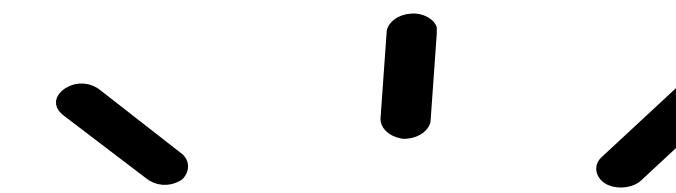


87%

of individuals
decreased Overall
Needs in Mental
Health, Social, and
Risk Behaviors

95%

of individuals
increased or
maintained Overall
Strengths and
Resiliency



Highlights

80%

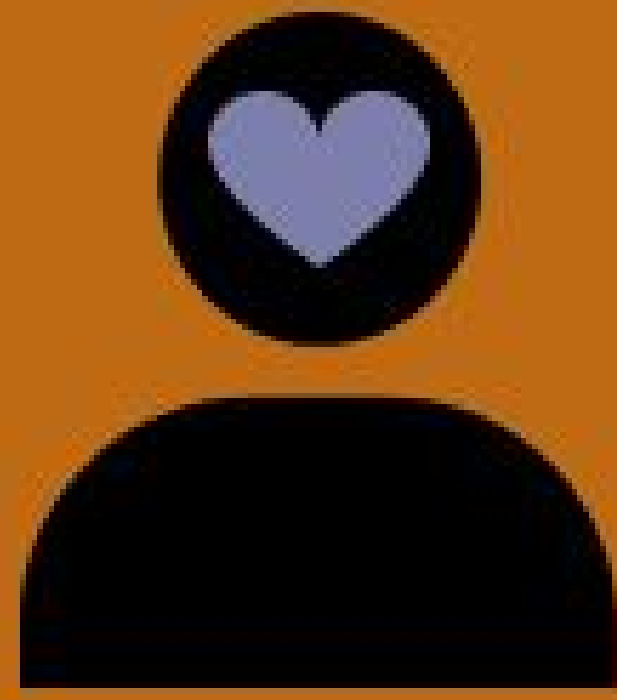
of individuals
showed
improvement or
maintained a low
level of need in
**oppositional
behaviors**

78%

of individuals
showed
improvement or
maintained a low
level of need with
**adjustment to
trauma**

78%

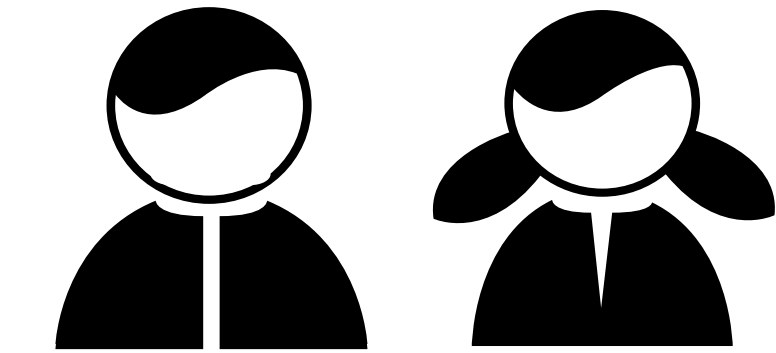
of individuals
showed
improvement or
maintained a
presence of strength
in **resiliency**



Mental Health

Program Statement

A community-based outpatient mental health program serving Medi-Cal eligible youth and families. The FIT program provides family-driven, culturally competent, strength-based, trauma-informed mental health services and supports to youth and families.



395

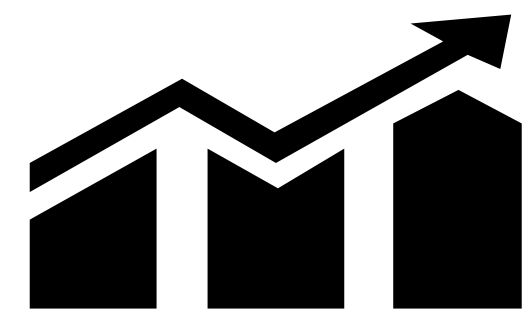
Individuals
Served

NEW
INDIVIDUALS

163

DISCHARGES

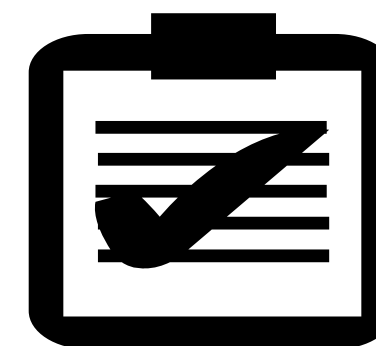
220



87%

of individuals made
progress towards their
treatment goals

CANS Scores

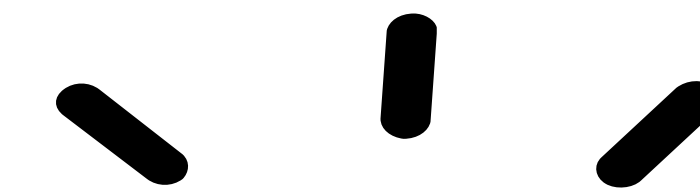


87%

of individuals
decreased Overall
Needs in Mental
Health, Social, and
Risk Behaviors

96%

of individuals
increased or
maintained Overall
Strengths and
Resiliency



Highlights

84%

of individuals
showed
improvement or
maintained a low
level of need in
school
achievements

77%

of individuals
showed
improvement or
maintained a low
level of need in
depression

81%

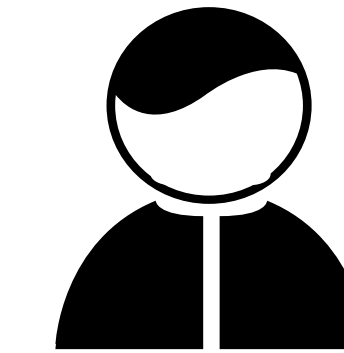
of individuals
showed
improvement or
maintained a
presence of strength
in interpersonal
skills



Juvenile
Justice

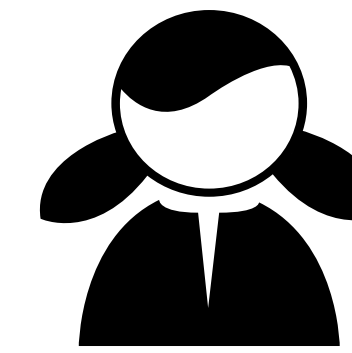
Program Statement

A prevention and intervention program that supports the Restorative Justice Model, which is focused on community protection, victim restoration, and offender accountability. Referrals are received from the Sacramento County Probation Department.



192

Individuals
Served

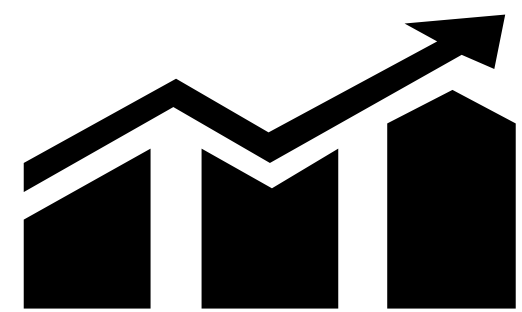


NEW
INDIVIDUALS

126

DISCHARGES

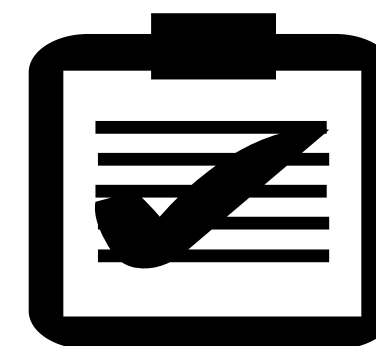
119



98%

of individuals made
progress towards their
treatment goals

CANS Scores

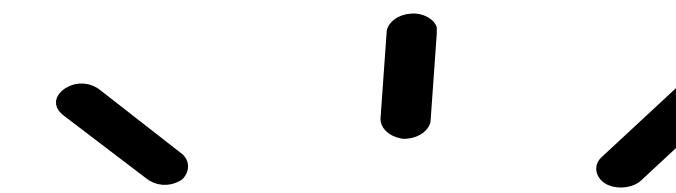


88%

of individuals
decreased Overall
Needs in Mental
Health, Social, and
Risk Behaviors

96%

of individuals
increased or
maintained Overall
Strengths and
Resiliency



Highlights

80%

of individuals
showed
improvement or
maintained a
low level of need
with **impulsivity**

84%

of individuals
showed
improvement
or a low level
of need in
**delinquent
behavior**

87%

of individuals
showed
improvement or
maintained a
presence of strength
in their **natural
supports**

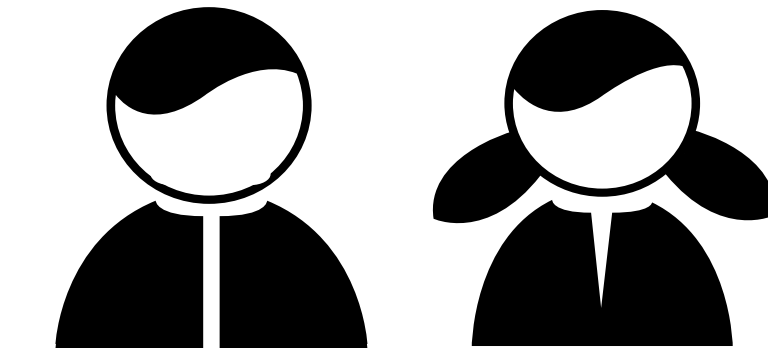
Program Report Card: **Juvenile Justice Prevention Services - Functional Family Therapy**



Juvenile
Justice

Program Statement

A prevention and intervention program that supports the Restorative Justice Model, which is focused on community protection, victim restoration, and offender accountability. Referrals are received from the Sacramento County Probation Department.



11

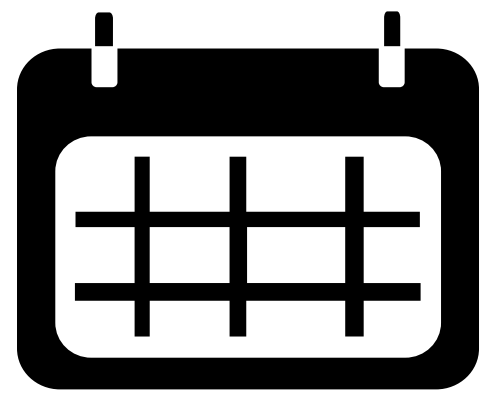
Individuals
Served

NEW
INDIVIDUALS

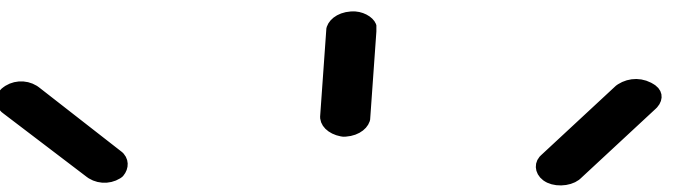
11

DISCHARGES

3



Services started in
March 2024



Highlights

3,577

minutes of
service delivery
across 11
individuals

The 1 youth who
discharged with
treatment delivery met
all their treatment goals

81%

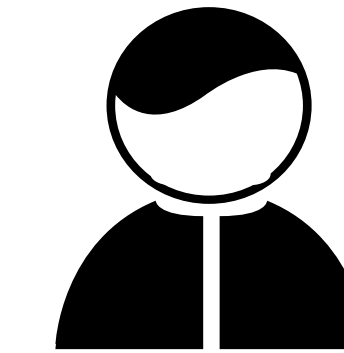
of individuals
received **Functional**
Family Therapy as
an intervention



Juvenile
Justice

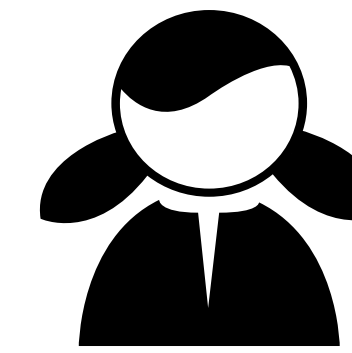
Program Statement

A prevention and intervention program that supports the Restorative Justice Model, which is focused on community protection, victim restoration, and offender accountability. Referrals are received from the Sacramento County Probation Department.



9

Individuals
Served

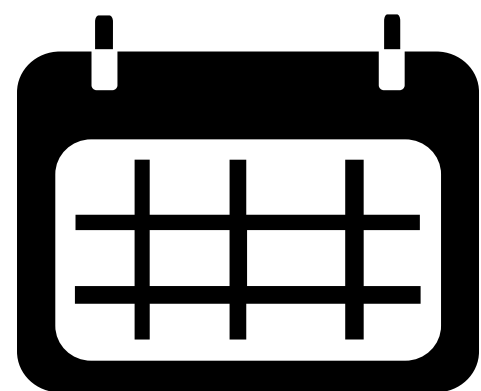


NEW
INDIVIDUALS

0

DISCHARGES

1



Services started in

February 2024



Highlights

10,410

minutes of
service delivery
across 9
individuals

93 days

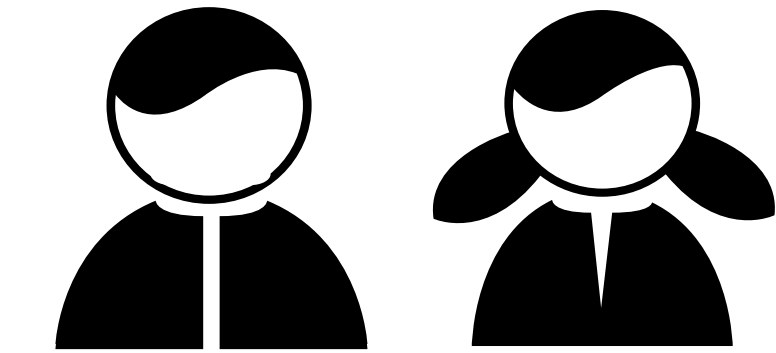
is the average
length of service
thus far

Program Statement



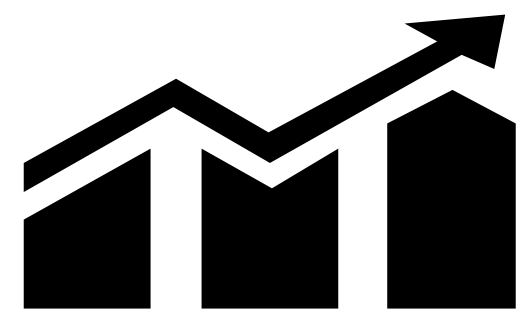
Family & Youth Empowerment

To assist kinship caregivers with understanding, navigating, and accessing the system of out-of-home care supports and services for children. Kinship navigators provide flexible and responsive services to kinship families based on family needs. Kinship navigators initially provide caregivers with information, referrals, and advocacy services. Navigators also assist caregivers in identifying and removing barriers to service receipt; accessing benefits for which they are eligible; accessing legal services; and utilizing existing community resources and support systems (such as health, financial, legal services, support groups, training, and emergency funds).



25
Individuals
Served

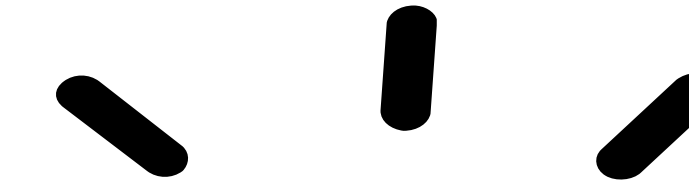
**NEW
INDIVIDUALS
21
DISCHARGES
21**



85%
of individuals made
progress towards their
treatment goals



100%
of individuals served expressed
overall satisfaction with services
provided



HIGHLIGHTS

75%
of individuals at
discharge felt more
equipped to handle
challenges on their
own

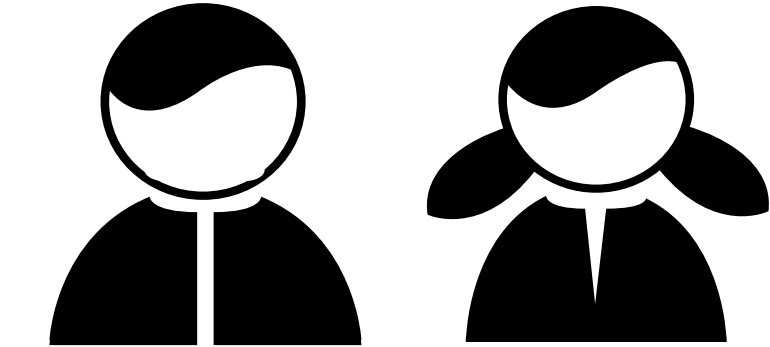
100%
of individuals at discharge
felt they would have
support they need in a
crisis/challenging situation



Permanency

Program Statement

A program uniquely focused on permanency. The program provides services to every type of family - birth, kinship, foster, and adoptive - to promote secure attachment with lifelong permanency as the goal.

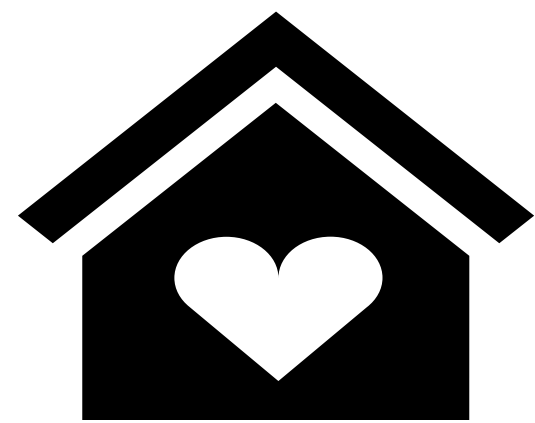


110

Individuals
Served

49

New
Placements



ADOPTIONS

18

KINSHIP/NREFM

7

GUARDIANSHIPS

2

REUNIFICATIONS

16

The Pathways to Permanency Team helped to place children from **16 counties** throughout California

- Alameda
- Butte
- Contra Costa
- El Dorado
- Monterey
- Nevada
- Placer
- Sacramento
- San Bernardino
- San Francisco
- San Joaquin
- Shasta
- Solano
- Tehama
- Tulare
- Yolo



**FAMILY
HIGHLIGHTS**

113

families
attended
orientation

11

families were
approved to be
Resource Parents

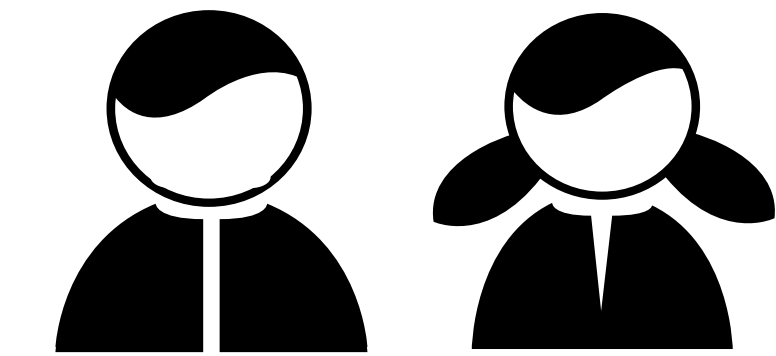


Family & Youth Empowerment

Program Statement

To engage youth and caregivers more fully in their case planning and services process, and to help them understand their rights and responsibilities. Family finding and appropriate linkage to resources are also provided to youth and caregivers.

*Comprised of Parent Partner Services - El Dorado, Parent Partner Services - Solano, Peer Services - Napa, and Youth Advocacy Services - El Dorado



113

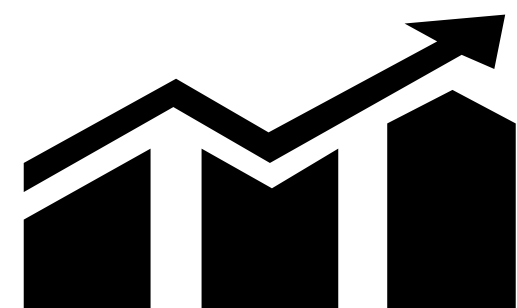
Individuals Served

NEW INDIVIDUALS

89

DISCHARGES

87



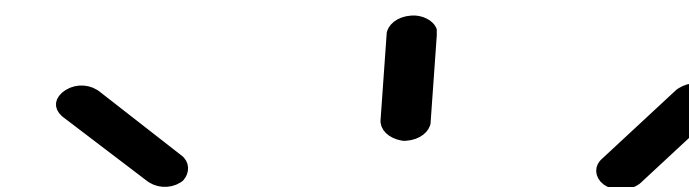
70%

of individuals made progress towards their treatment goals



100%

of individuals served expressed overall satisfaction with services provided



HIGHLIGHTS

98%

of individuals at discharge felt more equipped to handle challenges on their own

95%

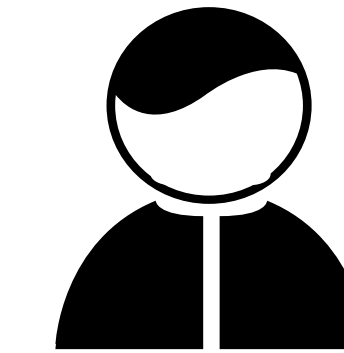
of individuals at discharge felt they would have support they need in a crisis/challenging situation



Mental Health

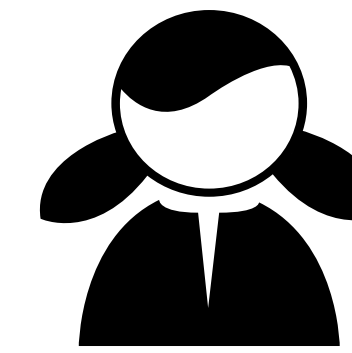
Program Statement

A program that combines a family-centered, strengths-based, needs-driven, team-driven approach that literally "wraps" services around a family with individualized, wellness-focused, and permanency driven planning and intervention for youth and families.



49

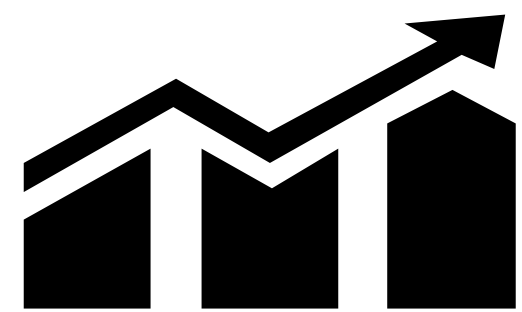
Individuals
Served



NEW
INDIVIDUALS

44

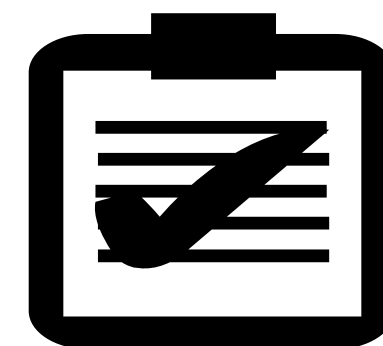
DISCHARGES
32



88%

of individuals made
progress towards their
treatment goals

CANS Scores

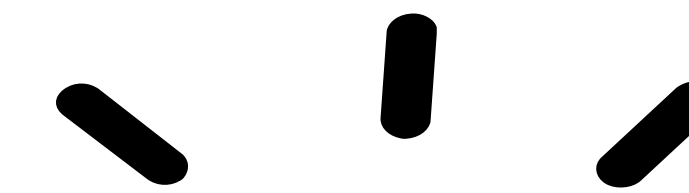


82%

of individuals
decreased Overall
Needs in Mental
Health, Social, and
Risk Behaviors

91%

of individuals
increased or
maintained Overall
Strengths and
Resiliency



Highlights

77%

of individuals
showed
improvement or
maintained a low
level of need
with their
anxiety

82%

of individuals
showed
improvement or
maintained a low
level of need in
their conduct

82%

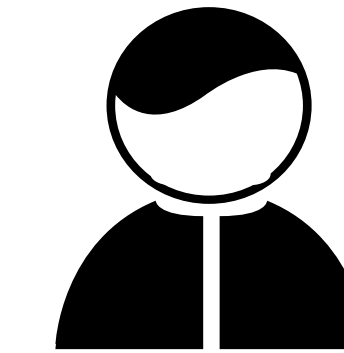
of individuals
showed
improvement or
maintained a low
level of need
with adjustment
to trauma



Substance Use Prevention

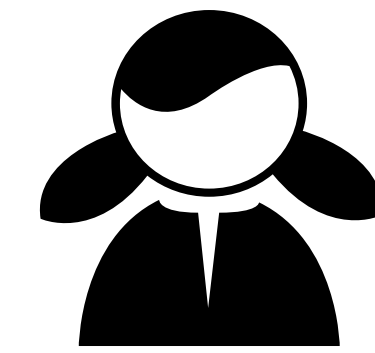
Program Statement

A program that provides prevention and early intervention outpatient, intensive outpatient, and aftercare services for youth with substance use disorders and co-occurring mental health service needs.



199

Individuals Served

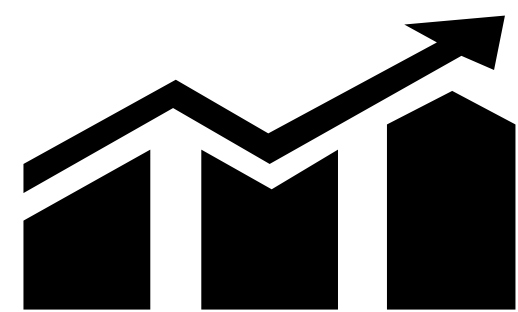


NEW
INDIVIDUALS

151

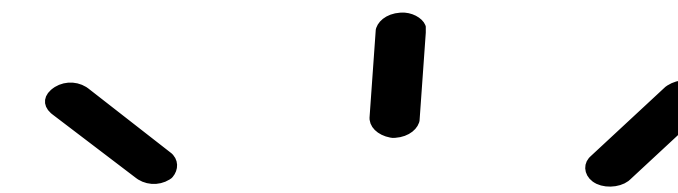
DISCHARGES

142



70%

of individuals made progress towards their treatment goals



Highlights

111

groups were facilitated to offer support to individuals in the RYSE Above program

469

individuals attended groups focused on various topics such as Harm Reduction, Boundaries, and Dealing with Trauma, amongst others

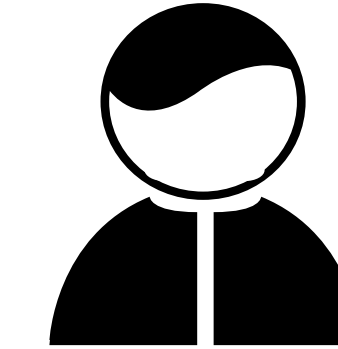


Mental Health

Program Statement

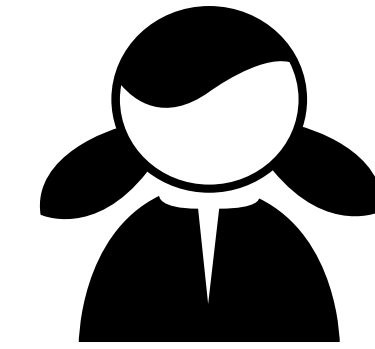
A program that provides mental and behavioral health to students that attend CA Connections Academy, an online charter school. The school services program provides treatment to students identified by the school as needing mental or behavioral health services through the individualized education plan (IEP) process.

*Comprised of California Connection, Sequoia Grove, and Wellness Partnership



186

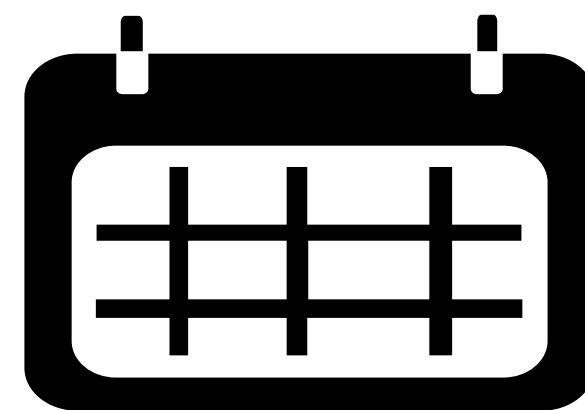
Individuals
Served



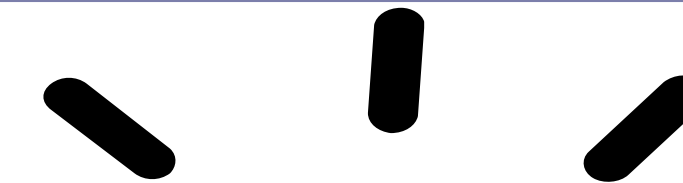
NEW
INDIVIDUALS

139

DISCHARGES
120



The Average Length of Service
for an individual in the
program was **345** Days



Highlights

88%

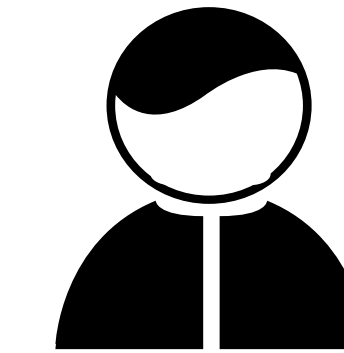
of individuals made
progress towards their
treatment goals



Mental Health

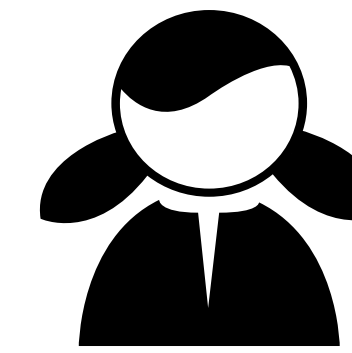
Program Statement

A supplemental mental health service that is available to assist Medi-Cal eligible youth who are experiencing stressful transitions or life crises. The program offers one-to-one therapeutic contact between a mental health provider and youth for a short period of time.



12

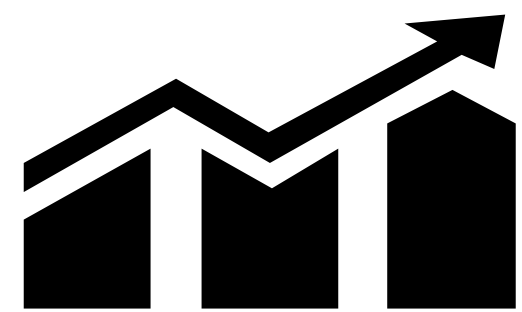
Individuals
Served



NEW
INDIVIDUALS

12

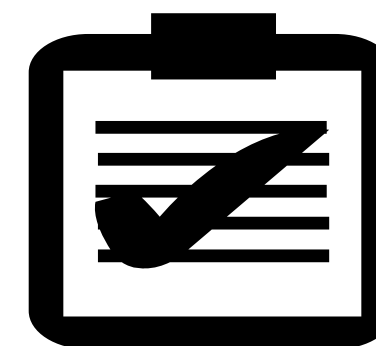
DISCHARGES
6



100%

of individuals made
progress towards their
treatment goals

CANS Scores

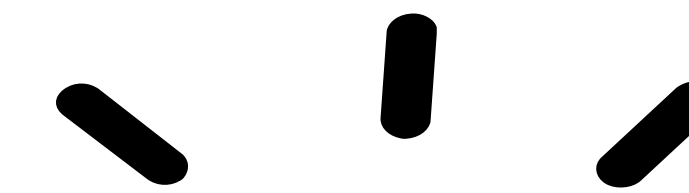


17%

of individuals
decreased Overall
Needs in Mental
Health, Social, and
Risk Behaviors

100%

of individuals
increased or
maintained Overall
Strengths and
Resiliency



Highlights

100%

of individuals
showed
improvement or
maintained a
presence of strength
with their **family**

83%

of individuals
showed
improvement or
maintained a
presence of strength
in their **natural
supports**

100%

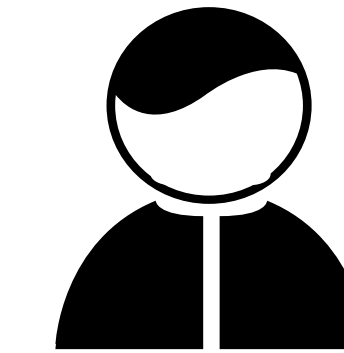
of individuals
had a lower
risk of **self-
harm
behaviors** by
the end of
services



Mental Health

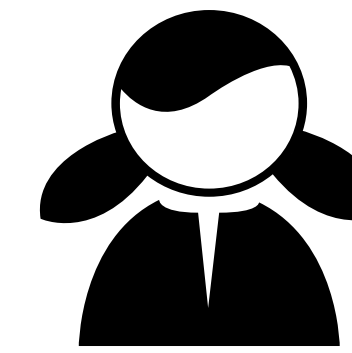
Program Statement

A supplemental mental health service that is available to assist Medi-Cal eligible youth who are experiencing stressful transitions or life crises. The program offers one-to-one therapeutic contact between a mental health provider and youth for a short period of time.



87

Individuals
Served

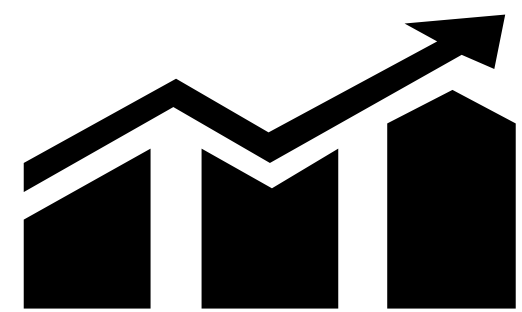


NEW
INDIVIDUALS

69

DISCHARGES

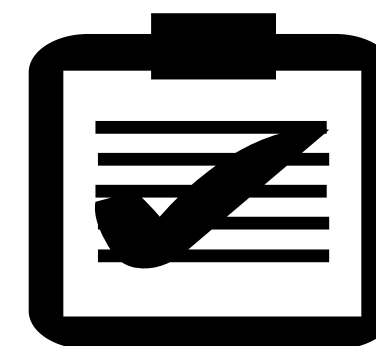
64



98%

of individuals made
progress towards their
treatment goals

CANS Scores

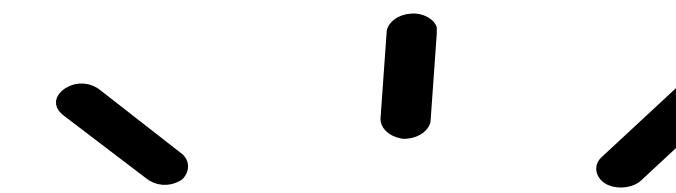


82%

of individuals
decreased Overall
Needs in Mental
Health, Social, and
Risk Behaviors

95%

of individuals
increased or
maintained Overall
Strengths and
Resiliency



Highlights

89%

of individuals
showed
improvement or
maintained a low
level of need in
school behavior

85%

of individuals
had a lower
risk of **suicidal
behaviors** by
the end of
services

80%

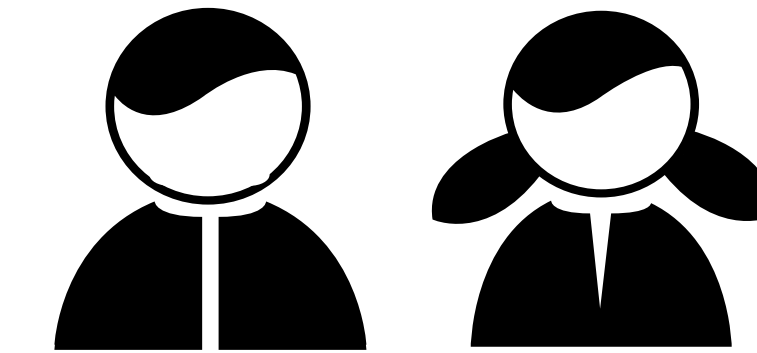
of individuals
showed
improvement or
maintained a
presence of strength
in **resiliency**

Program Statement



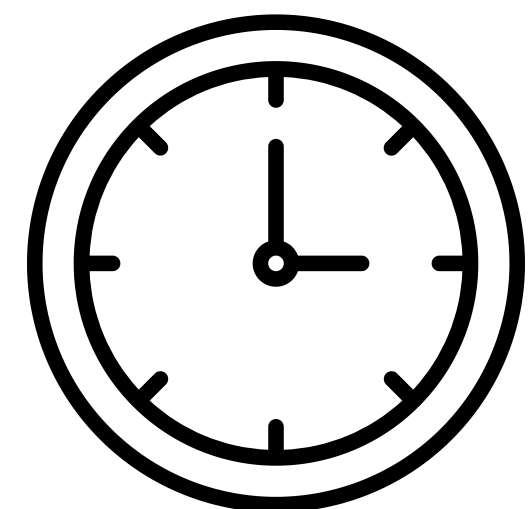
Family & Youth
Empowerment

A mentoring program, which pairs foster youth (Explorers) with a mentor (Guides) who is often the single reliable presence in that youth's life. The mentors are trained to listen, support and guide each youth through fun, age-appropriate experiences in music, the arts, sports, volunteer service, dining out and nature.



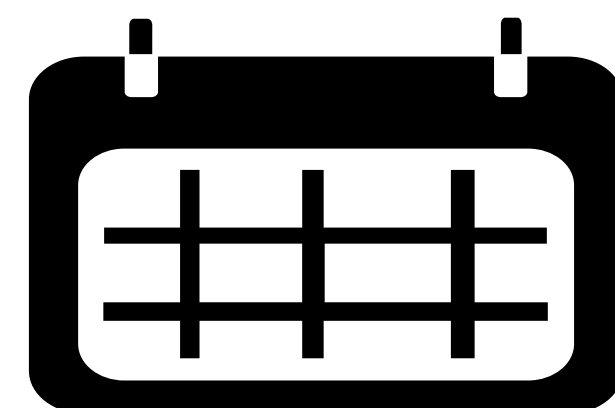
87

Total Matches



3,071

Hours of Mentorship
took place between
Explorers and Guides



The Average Length
of Mentorship
was **14 months**



HIGHLIGHTS

88%

Mentorship
experiences
contributed to
developing
confidence

86%

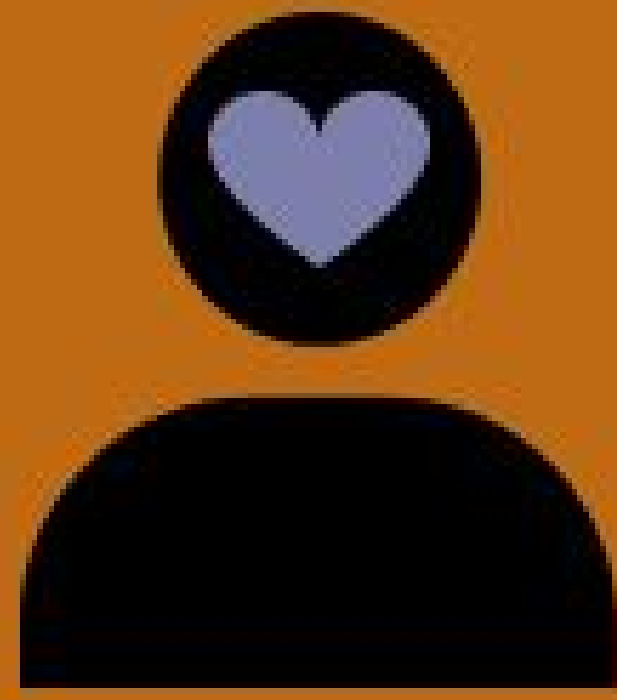
Mentorship
experiences
contributed to
developing a **sense
of belonging**

73%

Mentorship
experiences
contributed to
developing **future
oriented thinking**

77%

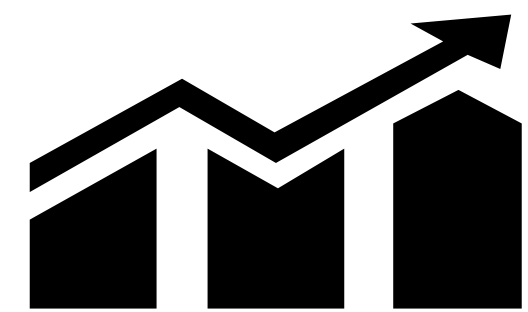
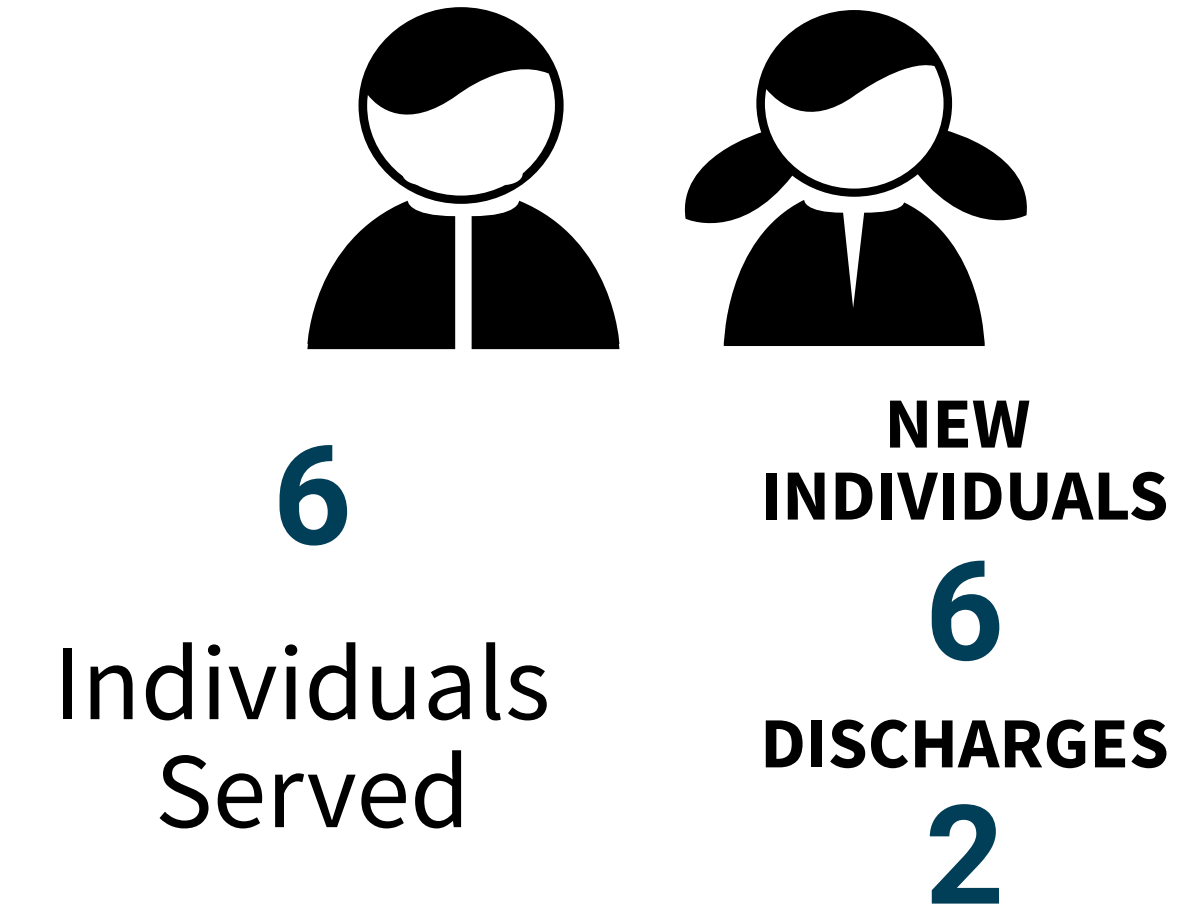
Mentorship
experiences
contributed to
developing a **sense
of self worth**



Mental Health

Program Statement

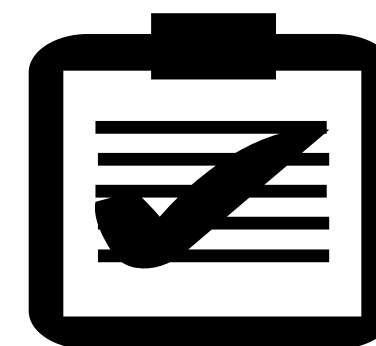
The goal of the program is to achieve stable permanency for the youth, and a positive environment for all family members.



100%

of individuals made progress towards their treatment goals

CANS Scores

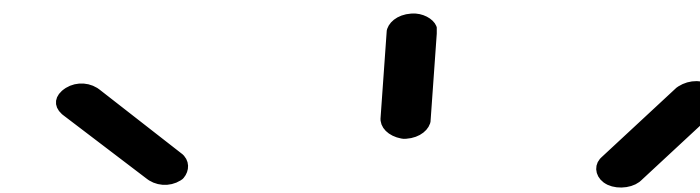


100%

of individuals decreased Overall Needs in Mental Health, Social, and Risk Behaviors

100%

of individuals increased or maintained Overall Strengths and Resiliency



Highlights

100%

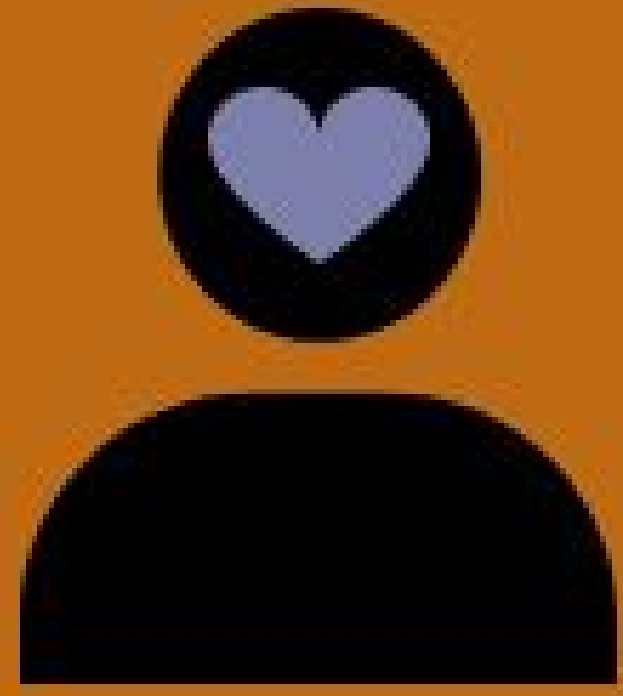
of individuals showed improvement or maintained a low level of need with their anxiety

100%

of individuals showed improvement or maintained a low level of need with adjustment to trauma

100%

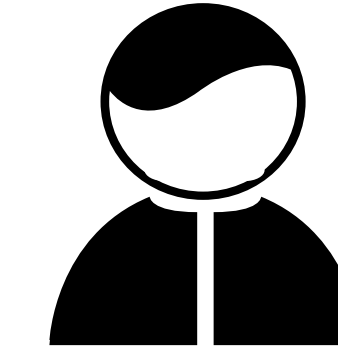
of individuals showed improvement or maintained a presence of strengths in interpersonal skills



Mental Health

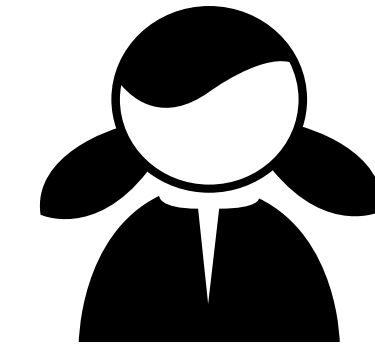
Program Statement

A program that combines a family-centered, strengths-based, needs-driven, team-driven approach that literally "wraps" services around a family with individualized, wellness-focused, and permanency driven planning and intervention for youth and families.



113

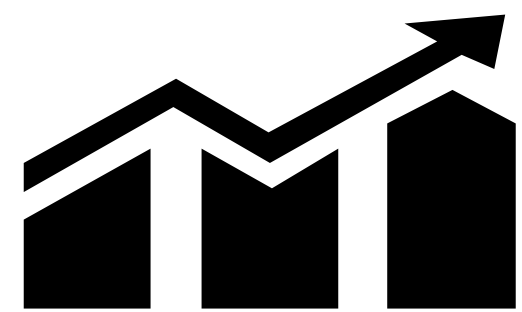
Individuals
Served



**NEW
INDIVIDUALS**

90

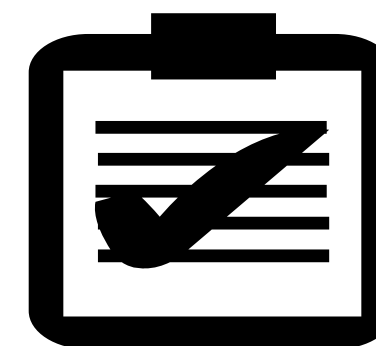
DISCHARGES
71



88%

of individuals made
progress towards their
treatment goals

CANS Scores

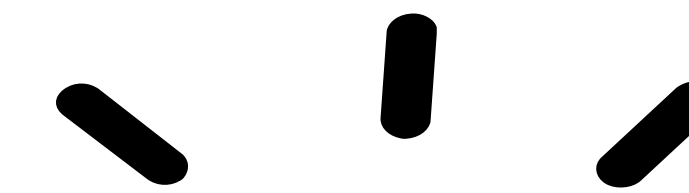


71%

of individuals
decreased Overall
Needs in Mental
Health, Social, and
Risk Behaviors

82%

of individuals
increased or
maintained Overall
Strengths and
Resiliency



Highlights

80%

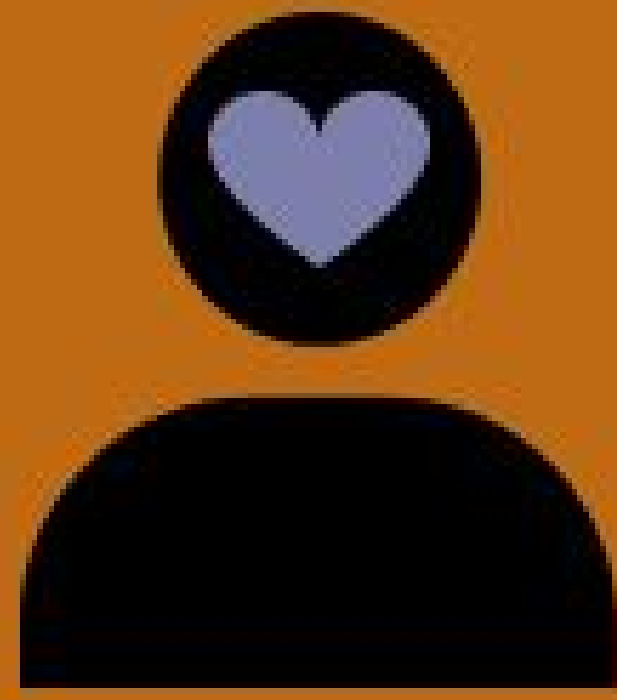
of individuals
showed
improvement
maintained a low
level of need in
anger control

85%

of individuals
showed
improvement or
maintained a low
level of need in
their **conduct**

83%

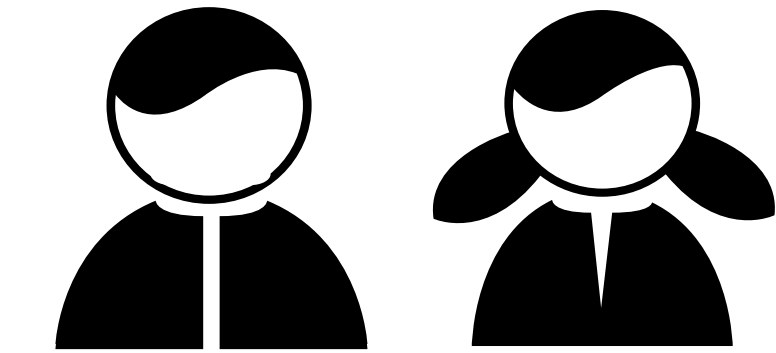
of individuals
showed
improvement or
maintained a low
level of need in
school behavior



Mental Health

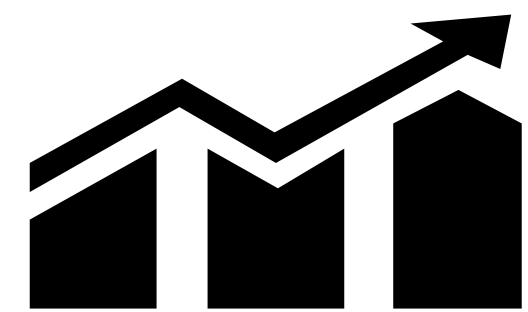
Program Statement

A program that combines a family-centered, strengths-based, needs-driven, team-driven approach that literally "wraps" services around a family with individualized, wellness-focused, and permanency driven planning and intervention for youth and families.



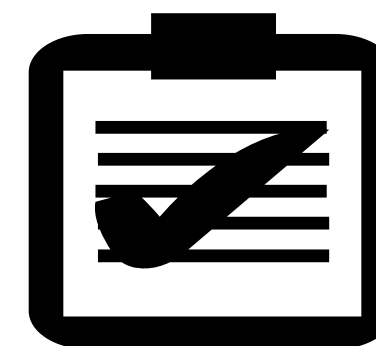
104
Individuals
Served

NEW
INDIVIDUALS
64
DISCHARGES
100



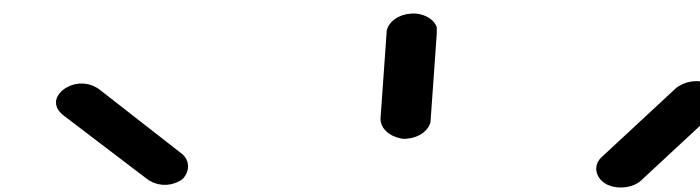
77%
of individuals made
progress towards their
treatment goals

CANS Scores



65%
of individuals
decreased Overall
Needs in Mental
Health, Social, and
Risk Behaviors

90%
of individuals
increased or
maintained Overall
Strengths and
Resiliency



Highlights

77%
of individuals
showed
improvement or
maintained a low
level of need in
their **conduct**

79%
of individuals
showed
improvement or
maintained a low
level of need in their
educational setting

79%
of individuals
showed
improvement in
their **talents and
interests**



Stanford Sierra Youth & Families

Report Prepared by
Evaluations Team

